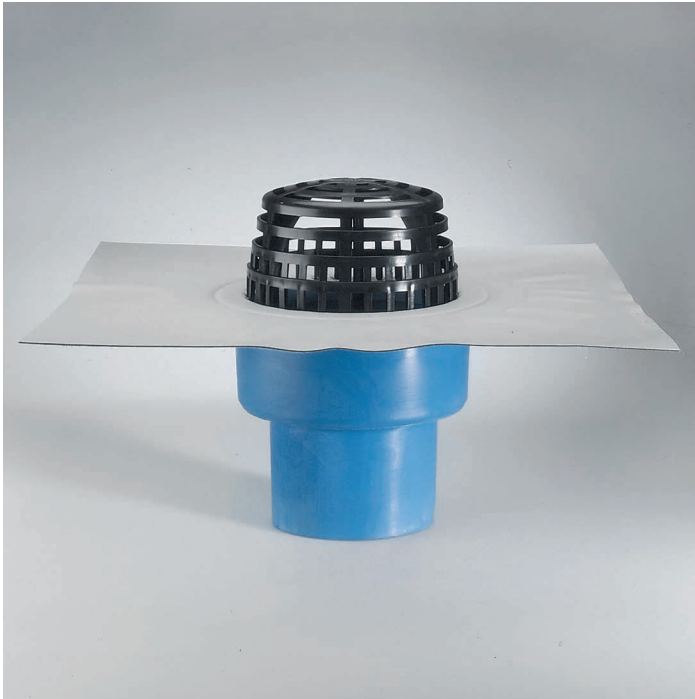


■ Collar drain DN 150 with adhesive collar



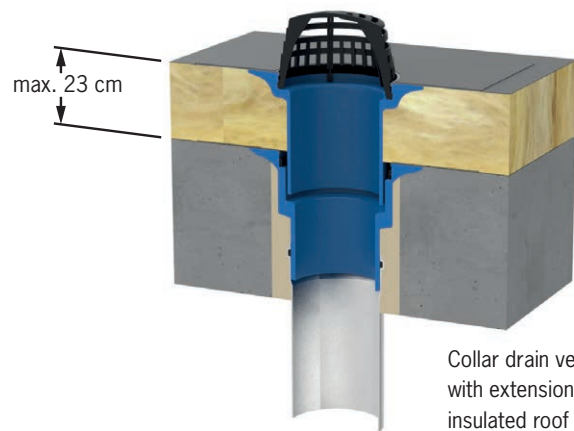
Collar drain made of PUR

heat insulated, CFC-free, with pebble trap and foam-filled connection collar (Bitumen, ECB, PVC or special foil).

Also heatable via an integrated, self-regulating 230 V PTC heating element, performance up to max. 10 W. We recommend using the frost switch base set (Art.-No. 5922, see page 69) in connection with our heatable drains.

Extension element with connection collar and anti-back flow seal, suitable for all compact collar drains..

Installation example Collar drain DN 150



Collar drain vertical DN 150 with extension element in an insulated roof

Securing groove + pebble trap = secure pebble collection

The securing groove ensures that the connection between the body of the drain and the pebble trap is permanently secure

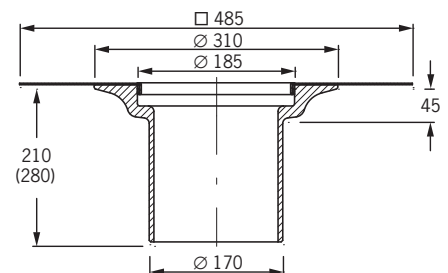
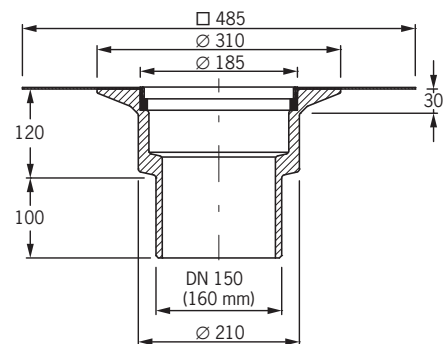
Securing groove + Anti-backflow seal = Secure backflow prevention

If base elements and extensions are used, as in e.g. insulated roofs, then the securing groove of the base element would be connected with the anti-backflow seal. The anti-backflow seal, which was specially developed for the collar drain, can be securely fastened to the securing groove.

If the extension element is fitted into the base element, backflow prevention is provided.

The seal can not slip during this process as the seal always sits correctly.

Technical data Collar drain DN 150

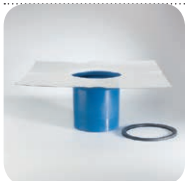
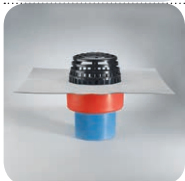


Dimension | Art. No.

Collar drain made of PUR
vertical:
DN 150 **3008**

Collar drain made of PUR
vertical
heatable (230V):
DN 150 **3028.2**

Extension element made of PUR
up to 16 cm **3081**
up to 23 cm **3083**



Art. No	Drainage capacity*
3008, 3028.2	9,5 l/s (45 mm)

*Drainage capacity acc. to DIN EN 12532 in l/sec (accumulation height in millimeters)