

# ■ Retention attachment less can be more



## Reducing of drainage capacity made easy

The Grumbach retention attachment enables the adjustable, throttled drainage of rainwater in connection with various drains from the flat roof range.

### All retention attachments

- are made of CFC-free PUR
- with rotatable overflow element to regulate the opening size
- Throttling possible by four adjustable inlet openings

### Retention element without seal

- suitable for all Universal drains (except for extension elements)

### Retention element with seal Type I

- incl. suitable backflow seal made of EPDM Art. No. 5990
- suitable for extension elements of the Universal drains

### Retention element with seal Type II

- incl. suitable backflow seal made of EPDM Art. No. 5990.N
- suitable for the compact collar drains
- suitable for extension elements of the compact collar drains
- suitable for attica flat drains with adhesive collar



Dimension | Art. No.



**Retention element**  
without seal  
**2150**



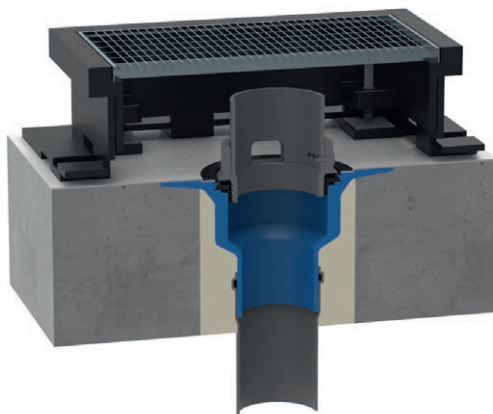
**Retention element Type I**  
with seal Art. No. 5990  
**2150.I**



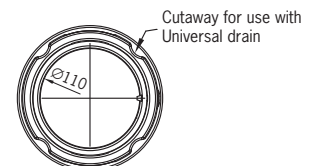
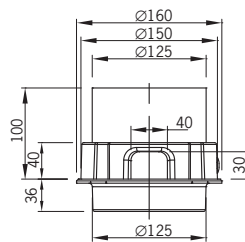
**Retention element Type II**  
with seal Art. No. 5990.N  
**2150.II**

## Installation example retention element Type II

Retention element Type II inserted in a compact collar drain with applied backflow seal for a throttled drainage of the accumulating rainwater. Delimitation to the greenery is done with a green roof safety drain e.g.(Art. No. 5000)



## Technical data retention element



Art.	Description	Opening size	Drainage capacity*
2150	Retention element	100%	1,25 l/s (35 mm)
2150.I	Retention element with seal Type I resp. II	75%	1,05 l/s (35 mm)
2150.II		50%	0,75 l/s (35 mm)
		25%	0,40 l/s (35 mm)

\*Drainage capacity acc. to DIN EN 1253-2 in l/sec (accumulation height in millimeters)