

Pre-fabricated bathrooms INDIVIDUAL

A real alternative to conventional constructions.



■ Pre-fabricated bathroom INDIVIDUAL

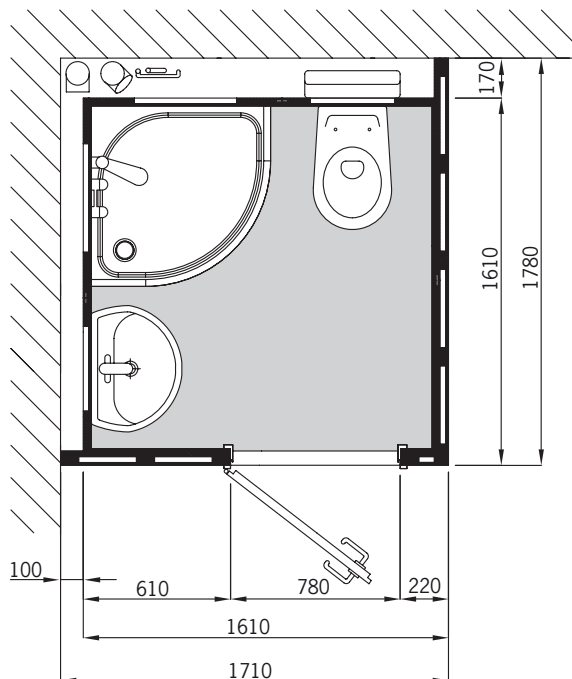
General description

- Body made of element units. Floor piece, walls and ceiling can be transported through normal doors.
- Floor piece shaped into a water-tight tub made of plastic (PVC) with surrounding 10 cm high edge, water-tight vinyl floor in tiled look.
- Very stable wall construction made of OSB panels with installation room for pipes and fastening equipment.
- Internal wall made of 8 mm thick, high-quality plastic panels in white (RAL 9016).
- Optionally available with internal walls with designed surface.
- Steel door frame and access door with ventilation grate, door lock with "occupied" sign and two clothes hooks
- Light switch outside next to the access door with indicator light
- Water pipes made of plastic from "REHAU" pre-assembled to the assembly duct
- Draining pipes made of HT pipes, pre-fitted to assembly duct
- Lighting with 4 LED lights built into the ceiling.
- Including material for electrical installation
- Equipment for a ventilation connection DN 100
- 2 flexible connection hoses for cold and hot water, 1m long
- Optionally with external cladding set, consisting of plasterboard and putty and quick assembly screws for a surface that can be wallpapered.

NEW!



Figure shows special equipment



Pre-fabricated bathroom INDIVIDUAL Type I

complete and high-quality fitted pre-fabricated bathroom with quarter-circle shower, wall-hanging ceramic WC and porcelain washstand: suitable for the right- or lefthand corner of the room in the case of a roughly square layout.

Also available as a **pre-fabricated bathroom INDIVIDUAL Type II** with narrow, right-angled layout, with square shower.

Pre-fabricated bathroom Individual Type I, model 60.RSL

For further models, see page 84.

■ Equipment and interior design pre-fabricated bathroom INDIVIDUAL (Type I+II)

Interior design WC area (WC)

- Ceramic WC, wall hanging
- Toilet seat with lid, white
- Concealed cistern with flush panel "Sigma 01", manufacturer GEBERIT®
- Toilet paper holder made of chrome

Interior design washstand area (WT)

- Porcelain washstand 55 x 43 cm, white
- Bottle siphon, corner valve and drain made of chrome
- Chrome plated one handed mixer with ceramic seal
- Porcelain shelf
- Crystal mirror 60 x 80 cm
- Wetroom electric socket
- 2 towel hooks and a towel rail

Interior design showering area (DU)

- Shower tray 80 x 80 cm (quarter-circle in Type I) made of acrylic, white, access height approx. 21 cm
- Shower tray 90 x 90 cm in Type II
- Chrome plated one handed mixer with ceramic seal
- Shower set, brand name, chrome plated including soap dish
- High-quality real glass sliding door



Figure shows special equipment

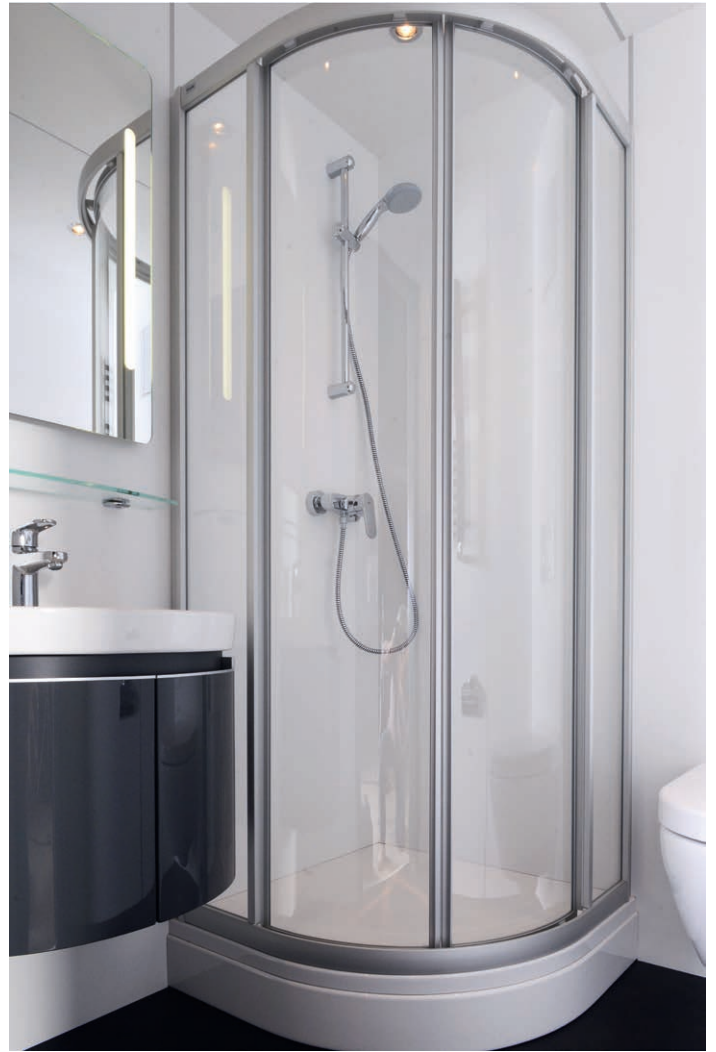


Figure shows special equipment



Pre-fabricated bathroom INDIVIDUAL Type I

OSB-panels afford greater stability; water supply and drainage to the assembly shaft are pre-fitted.