



Pre-fabricated bathrooms from Grumbach

save time, money and space when planning and installing

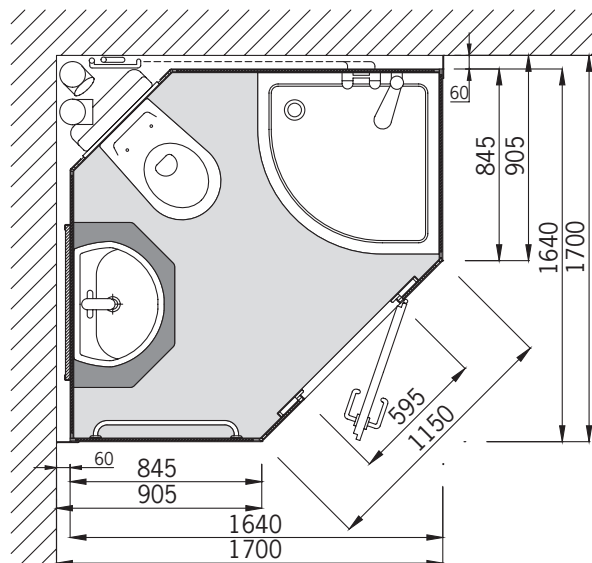


Scan the QR Code and watch the [installation video](#) for the pre-fabricated bathroom UNIVERSAL

■ Pre-abricated bathroom UNIVERSAL

General description

- Body made of element units in light construction (low weight!)
- Walls, floor, ceiling and access door are made of high-quality plastic (PS)
- Cabinet colour: white
- Floor covering is PVC
- Waterproof, white access door made of PS with ventilation grate, door lock with "occupied" sign and two clothes hooks
- Light switch outside next to the access door with indicator light
- Base in sandwich construction with dual sided strengthened coating and PS hard foam core
- The base has a lip 1.5 cm high around the rim creating a tub
- Base with adjustable feet for easy positioning
- Water pipes made of plastic pre-assembled to the assembly duct
- Draining pipes made of HT pipes, pre-fitted to assembly duct
- Access panel to the connection duct
- Lighting is provided by ceiling lamps (3)
- Including material for electrical installation
- Equipment for a ventilation connection - DN 100
- 2 flexible connection hoses for cold and hot water, 1m long, 3/4" x 1/2"
- Two facings made of plastic for the walls are included in the scope of delivery
- The access height is only about 8 cm.



Pre-fabricated bathroom UNIVERSAL is the ideal solution for installation in the corner. **It requires less than 3 m² floor space!**

Pre-fabricated bathroom UNIVERSAL

complete and high-quality equipped pre-fabricated bathroom with quarter-circle shower, wall-hanging ceramic **WC** and porcelain washstand; suitable for the right-hand or left-hand room corner.

■ Equipment and interior pre-fabricated bathroom UNIVERSAL

Interior design WC-area (WC)

- Ceramic WC- wall hanging toilet seat with lid, white
- Concealed cistern with "SIGMA 01" flush panel, white, from GEBERIT
- Toilet paper holder made of chrome

Interior design Washstand area (WT)

- Porcelain washstand 55 x 43cm, white, Bottle siphon, corner valve and drain made of chrome
- Chrome plated one handed mixer with ceramic seal
- Porcelain shelf
- Crystal mirror 120 x 80 cm
- Wetroom electric socket
- 2 towel hooks and a towel rail made of chrome
- with WT-base cabinet
- optional electric radiator for towels

Interior design Showering area (DU)

- Quarter circle shower tray 80x80 cm
- made of acrylic, white
- Access height approx. 20 cm
- Chrome plated one handed mixer with ceramic seal
- Shower set, brand name, chrome plate including soap dish
- High-quality Eloxal real glass doors