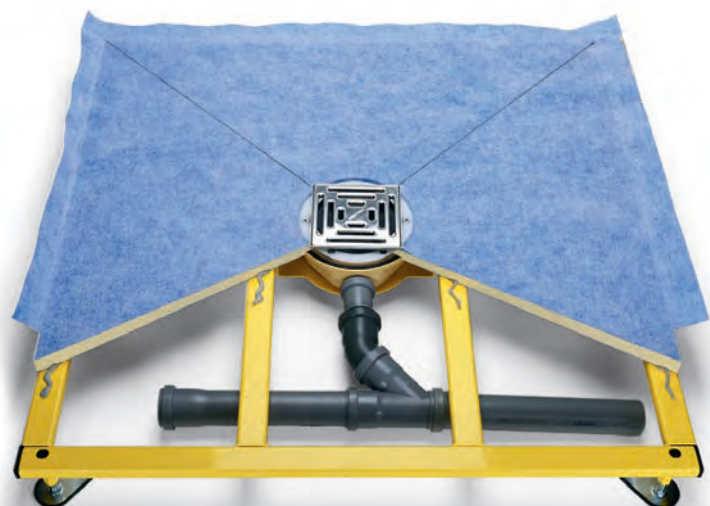


- Pre-fabricated elements for floor-level showers
- made of high grade, CFC-free and extra stable Polyurethane integral rigid foam (PUR)
- can be tiled directly

■ Support frame for shower floor elements made of lacquered or galvanized tubular steel



- **Yellow lacquered or galvanized tubular steel frame with adjustable feet and bracket for a Grumbach shower floor drain**

- **Support frame 90x90 cm (10 adjustable feet)**

Art.-No. 1814.90 405,- €

- **Support frame 120x120 cm (18 adjustable feet)**

Art.-No. 1814.120 545,- €

- **Support frame special size up to 90x90 cm (max. 10 adjustable feet)**

Art.-No. 1814.90.SON 425,- €

- **Support frame special size up to 120x120 cm (max. 18 adjustable feet)**

Art.-No. 1814.120.SON 565,- €

- **Support frame special size up to 120x200 cm (max. 24 adjustable feet)**

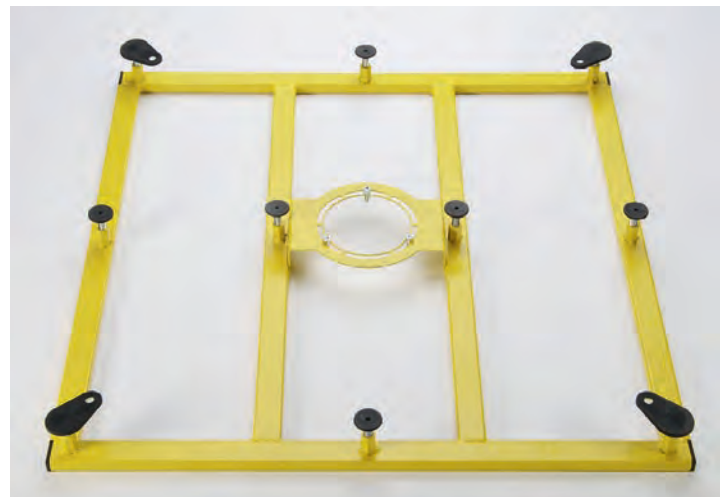
Art.-No. 1814.200.SON 695,- €

When ordering, please mention the article number of the shower floor element used.

- suitable for all Grumbach shower floor elements
- **very flat construction** for the optimal and simple mounting of shower floor elements
- simple mounting and plumbing of the Grumbach shower floor drain under the shower floor element
- suitable for vertical and horizontal drains
- a lot of room for the plumbing of the drainpipes
- with stable height-adjustable feet M12 for simple positioning and for fastening to the floor
- de-coupled from structure-borne sound due to rubber on the adjustable feet
- including mounting adhesive for sticking to the corresponding shower floor element



Scan the code and watch the **assembly video** for Grumbach shower floor elements!



Support frame for shower floor elements 90x90 cm, yellow lacquered, with 10 adjustable feet, bottom view



Support frame for shower floor elements 90x90 cm, galvanized, with 10 adjustable feet, view from above

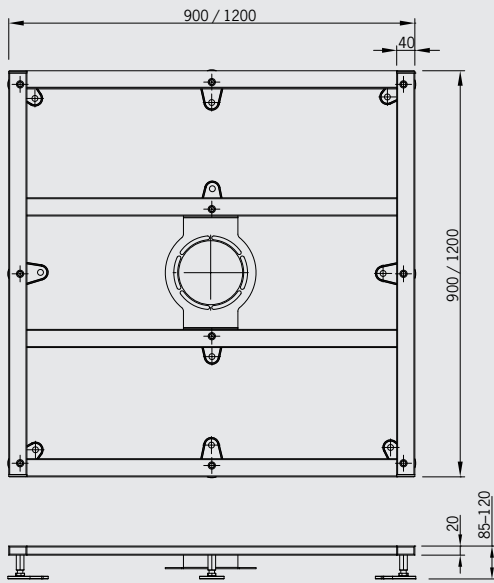


Bracket for the shower floor drain

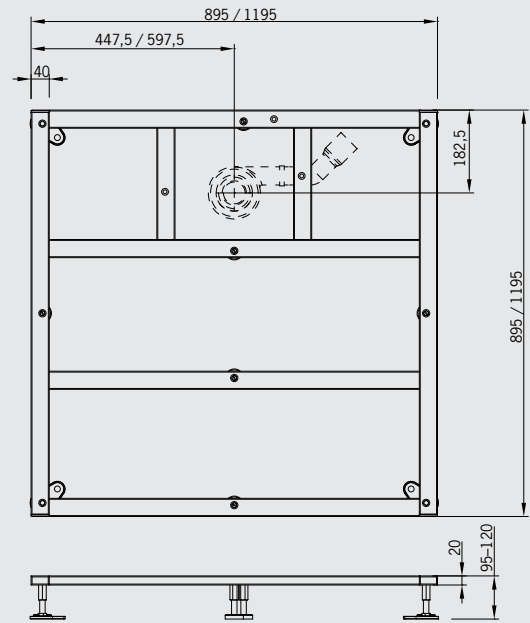


Adjustable feet for simple positioning and fastening: with layer of rubber for the de-coupling of structure-borne noise. The number of adjustable feet depends on the frame size.

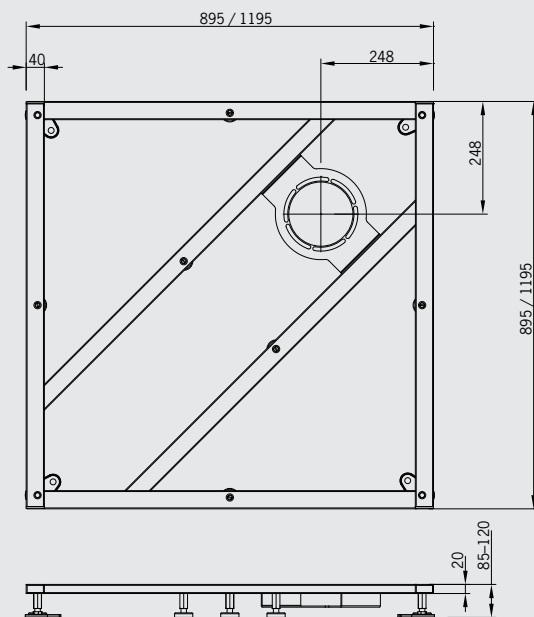
Support frame for central drain



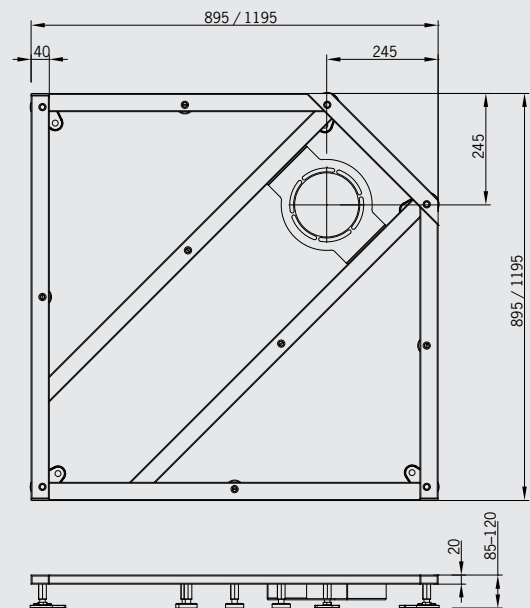
Support frame for channel drainage



Support frame for eccentric drain



Support frame for eccentric drain for use with the corner installation panel



Extra cost for special

for shower floor elements made of PUR

Art.-No. 1899.0 80,-



Connecting sealing strips and adhesive cartridge

Adhesive for sealing strips, 300 ml cartridge

Art.-No. 1898 net price 25,- €

Connecting sealing strip 12 cm width

Art.-No. 1890 net price 12,- €/m

Connecting sealing strip angled 6x6 cm

Art.-No. 1891 net price 12,- €/m

Connecting sealing strip inside corner

Art.-No. 1894 net price 12,- €

Connecting sealing strip outside corner

Art.-No. 1895 net price 12,- €