

■ Attica Meso-2 drain for use with a water collector

2 in 1



Assembly example: Attica Meso-2 drain with wedge (lange Version) mit Wasserfangkasten



Attica Meso-2 drain without wedge (short version)

Attica Meso-2 drain DN 100 made of PUR/ stainless steel

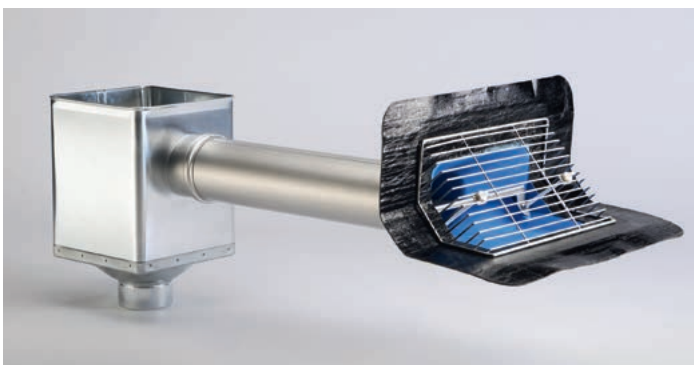
the comprehensive solution
for **main and emergency
drainage through only
one attica passage**. The
drain is available in a long
or short version, with/with-
out wedge and with various
connection collars.

The **scope of delivery** of the **atti-
ca Meso-2 drain** includes:

- 1 **Attica Meso drain DN 100**
with/without wedge (without PP
pipe)
- 2 **Stainless steel pipe** with
sleeve DN 100, 54 cm long
- 3 **Stainless steel pipe** with
sleeve DN 100, 30 cm long,
with cutaway for main and emer-
gency drainage and baffle plate
- 4 **Water guiding plate** (back and
front) for emergency drainage
- 5 **Leaf trap grate** made of stain-
less steel (Art. No. 3494.S)

optional extra:

- 6 **Water collector** made of zinc
sheet (drain support 100 mm/6-
piece, Art. No. 3450)
- 7 **Locking ring DN 100** (Art. No.
2695)



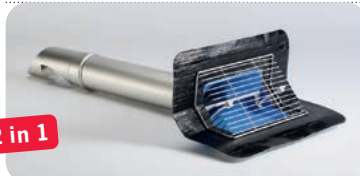
Attica Meso-2 drain (short version) with wedge and water collector



Attica Meso-2 drain (long version) without wedge and with water collector

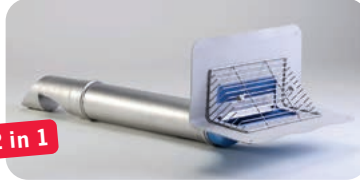
■ Attica Meso-2 drain for use with a water collector

Dimension | Art. No.



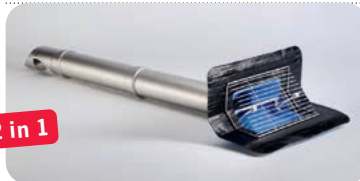
2 in 1

Attica Meso-2 drain made of PUR with wedge (short version)
for attica thickness **up to 60 cm**
DN 100 **3213.BIT.S2**
with wedge



2 in 1

Attica Meso-2 drain made of PUR without wedge (short version)
for attica thickness **up to 60 cm**
DN 100 **3214.S2**
without wedge



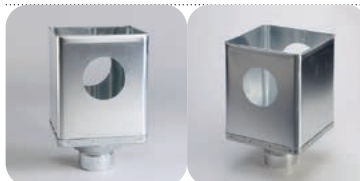
2 in 1

Attica Meso-2 drain made of PUR DN 100 with wedge (long version)
for attica thickness **up to 110 cm**
DN 100 **3213.BIT.S2.L**
with wedge



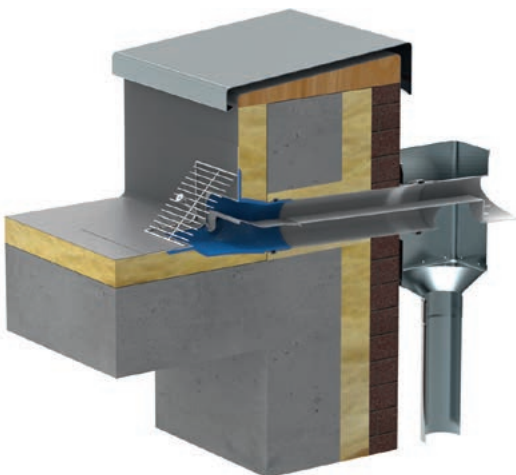
2 in 1

Attica Meso-2 drain made of PUR without wedge (long version)
for attica thickness **up to 110 cm**
DN 100 **3214.S2.L**



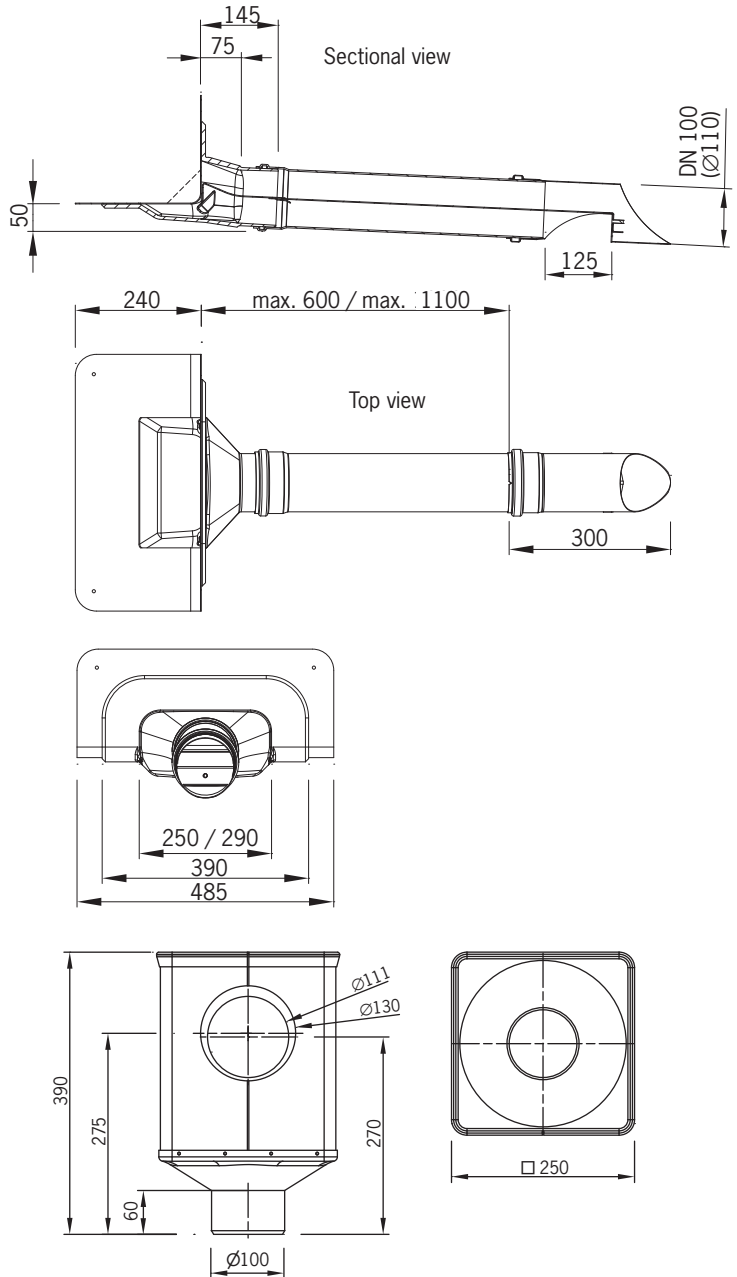
Water collector
3450

Installation example Attica Meso-2 drain



Attica Meso-2 drain with water collector, mounted in an insulated roof.
To avoid frost damage, we recommend using our trace heating systems (see page 74).

Technical data Attica Meso-2 drain



Art.	Drainage capacity*
Attica Meso-2 drain with/without wedge	Main drainage: 2,8 l/s (at 35 mm) Emergency overflow: 2,3 l/s (at 35 mm)
The use of the stainless steel leaf trap grate does not lower the drainage capacity!	

*Drainage capacity acc. to DIN EN 1253-2 in l/sec (accumulation height in millimeters)

■ Attica Meso-2 drain with partial flow diversion

2 in 1



Attica Meso-2 drain (long version) without wedge and with partial flow diversion

Attica Meso-2 drain DN 100 made of PUR/ stainless steel with partial flow diversion

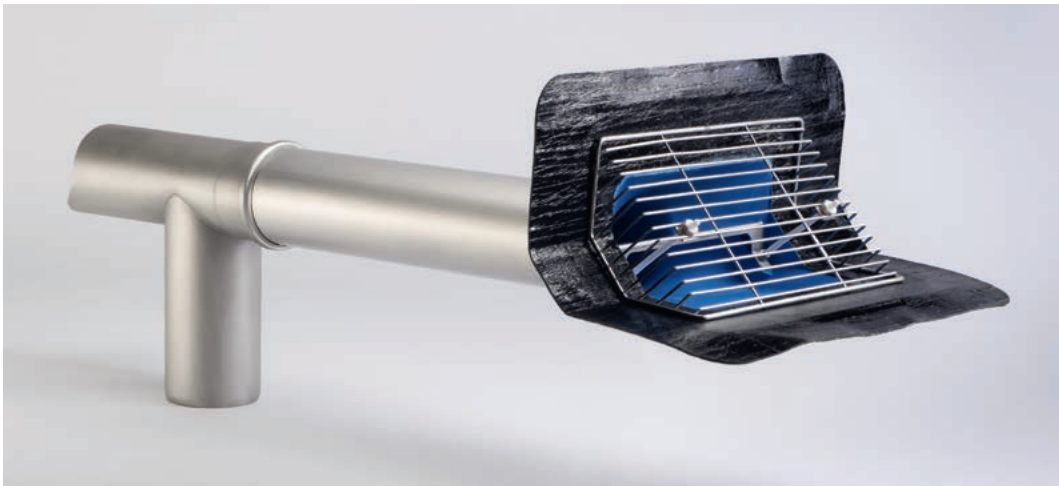
the comprehensive solution
for **main and emergency
drainage through only
one attica passage**. The
drain is available in a long
or short version, with/with-
out wedge and with various
connection collars.

The **scope of delivery** of the
**attica Meso-2 drain with partial
flow diversion** includes:

- ❶ **Attica Meso drain DN 100**
with/without wedge (without PP
pipe)
- ❷ **Stainless steel pipe** with
sleeve DN 100, 54 cm long
- ❸ **Partial flow diversion** made of
stainless steel
- ❹ **Water guiding plate** (back and
front) for emergency drainage
- ❺ **Leaf trap grate** made of stain-
less steel (Art. No. 3494.S)

optional extra:

- ❻ **Locking ring DN 100**
(Art. No. 2695)
- ❼ **Adaptor DN 100**
(Art. No. 2633)



Attica Meso-2 drain (short version) with wedge and with partial flow diversion



Attica Meso-2 drain (short version) without wedge and with partial flow
diversion



Attica Meso-2 drain (long version) with wedge and with partial flow diversion

Dimension | Art. No.

2 in 1



Attica Meso-2 drain made of PUR with partial flow diversion with wedge (short version)
for attica thickness **up to 60 cm**
DN 100 **3215.BIT**

2 in 1



Attica Meso-2 drain made of PUR with partial flow diversion without wedge (short version)
for attica thickness **up to 60 cm**
DN 100 **3216**

2 in 1



Attica Meso-2 drain made of PUR with partial flow diversion with wedge (long version)
for attica thickness **up to 110 cm**
DN 100 **3215.BIT.L**

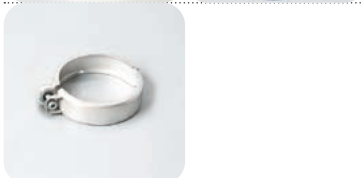
2 in 1



Attica Meso-2 drain made of PUR with partial flow diversion without wedge (long version)
for attica thickness **up to 110 cm**
DN 100 **3216.L**



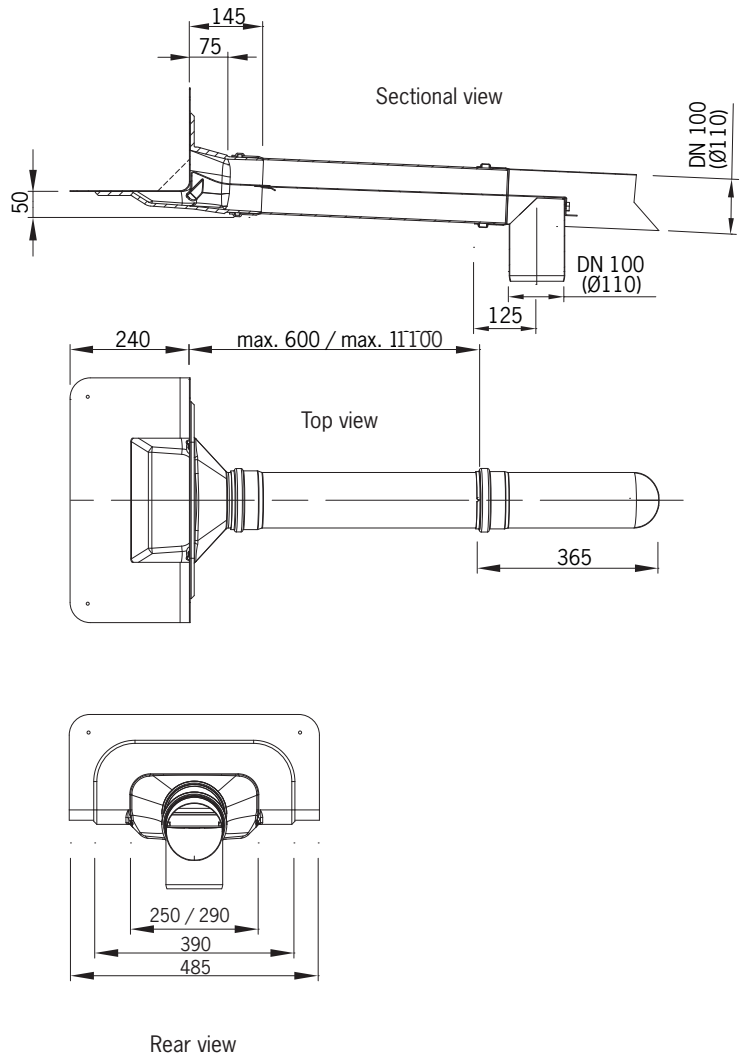
Adaptor DN 100
DN 100 **2633**



Safety clamp
DN 100 **2695**

■ Attica Meso-2 drain with partial flow diversion

Technical data Attica Meso-2 drain with partial flow diversion



Art.	Drainage capacity*
Attica Meso-2 drain with partial flow diversion, long/short version	Main drainage: 3,0 l/s (at 35 mm) Emergency overflow: 2,4 l/s (at 35 mm)
The use of the stainless steel leaf trap grate does not lower the drainage capacity!	

*Drainage capacity acc. to DIN EN 1253-2 in l/sec (accumulation height in millimeters)