

## ■ Eccentric drain for the downpipe sealing lead-through

### Eccentric drain

made of high quality, CFC-free polyurethane hard foam (PUR ). Optimal for draining roof surfaces lying one above the other through one downpipe. With adjusted flange for direct installation against the building wall.

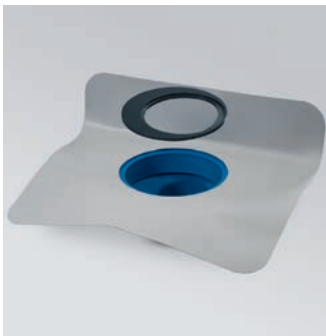
The incoming and outgoing pipe can be **adjusted eccentric-ly**, this allows the distance to the wall and misalignment of the downpipe to be easily compensated.

The eccentric drain is ideal for use on balconies on different storeys.

The connection collar is available in all common roof sealings. An eccentric disk is included in the scope of delivery; inlay sieve, sieve ring attachment and terrace construction kit are available as accessories.



Eccentric drain with terrace construction kit and sieve ring



Eccentric drain incl. eccentric disk



Eccentric drain with inlay sieve



Eccentric drain  
with sieve ring attachment DN 100



Eccentric drain  
with sieve ring attachment DN 70

**The maximum adjustment from the centre between the inlet and outlet downpipe is 96 mm!** Thanks to its various components, the eccentric drain from Grumbach solves a lot of problems with downpipe ceiling lead-throughs.

### Installation example eccentric drain with/without terrace construction kit

Eccentric adjustability (1) of the sieve ring element

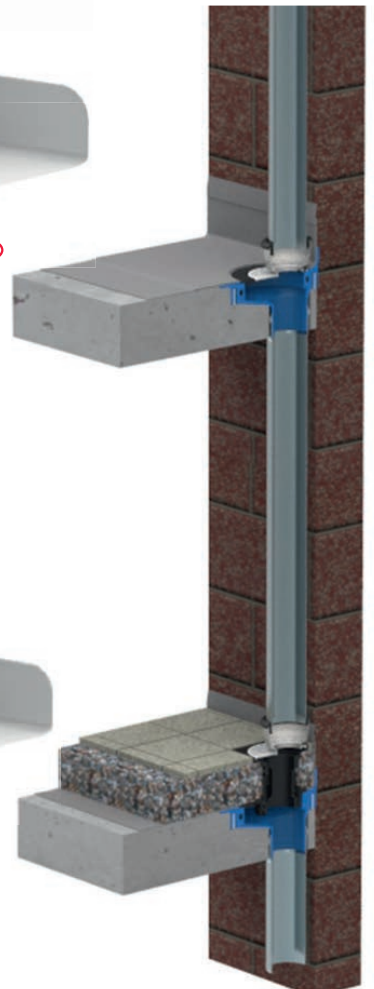
Eccentric adjustability (2) of the eccentric disc

Eccentric adjustability (3) of the drain support

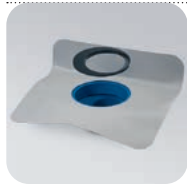
Sieve ring element with downpipe adaptor

Terrace construction set can be walked on

Eccentric drain with eccentric disk



Dimension | Art. No.



**Eccentric drain**  
incl. eccentric disk  
DN 100 **3722**



**Inlay sieve, round  
made of aluminum**  
suitable for eccentric drain  
diameter 160 mm  
**3449.S**



**Sieve ring attachment,  
eccentric**  
suitable for eccentric drain, for  
take-up of downpipes DN 70  
DN 70 **5903.E**



**Sieve ring attachment,  
eccentric**  
suitable for eccentric drain, for  
take-up of downpipes DN 100  
DN 100 **5904.E**



**Terrace construction kit, can  
be walked on (black)**  
complete with end grating  
without odour trap  
**5902**

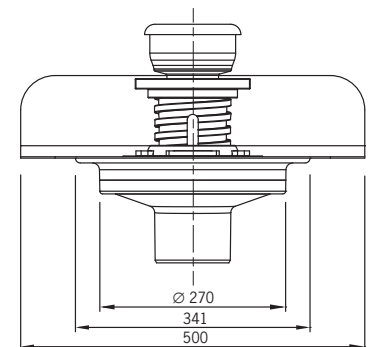
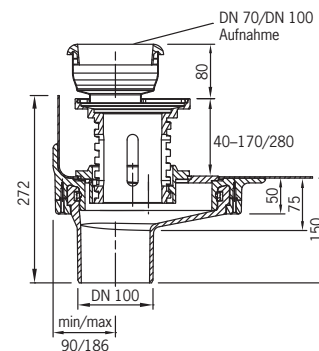
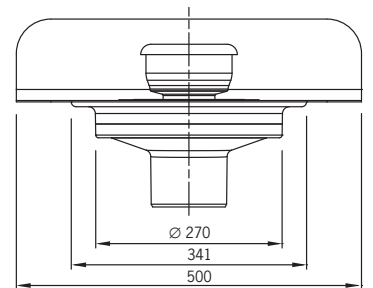
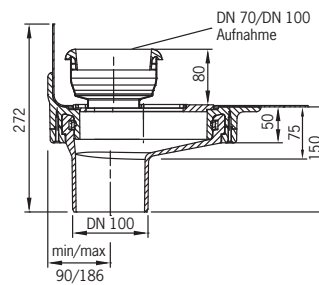


**Terrace construction kit PLUS**  
as Art. No. 5902, but with top  
covering made of stainless steel  
**5902.E**

## ■ Eccentric drain for the downpipe sealing lead- through

### Technical data eccentric drain

**The maximum adjustment from the centre** between the inlet and outlet  
downpipe **is 96 mm!**



### Installation example eccentric drain



Eccentric drain with terrace construction kit and sieve ring attachment DN 70



Eccentric drain with terrace construction kit and sieve ring attachment DN 100