

■ Retention attachment less can be more

Reducing of drainage capacity made easy

The Grumbach retention attachment enables the adjustable, throttled drainage of rainwater in connection with various drains from the flat roof range.

All retention attachments

- are made of CFC-free PUR
- with rotatable overflow element to regulate the opening size
- Throttling possible by four adjustable inlet openings

Retention element without seal

- suitable for all Universal drains (except for extension elements)

Retention element with seal Type I

- incl. suitable backflow seal made of EPDM Art. No. 5990
- suitable for extension elements of the Universal drains

Retention element with seal Type II

- incl. suitable backflow seal made of EPDM Art. No. 5990.N
- suitable for the compact collar drains
- suitable for extension elements of the compact collar drains
- suitable for attica flat drains with adhesive collar

Dimension | Art. No.

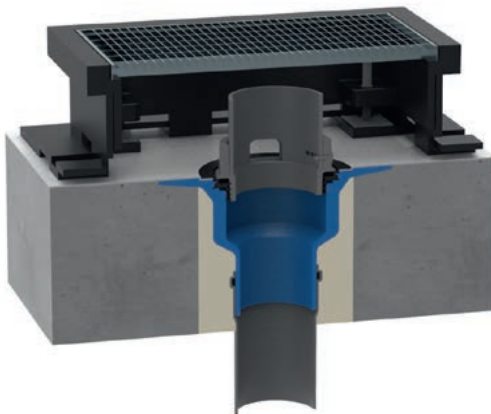
**Retention element
without seal**
2150

**Retention element Type I
with seal Art. No. 5990**
2150.I

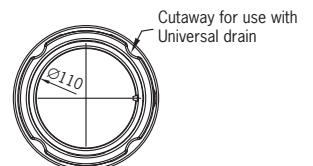
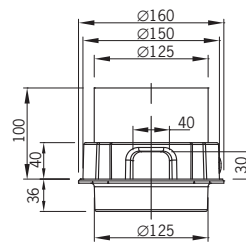
**Retention element Type II
with seal Art. No. 5990.N**
2150.II

Installation example retention element Type II

Retention element Type II inserted in a compact collar drain with applied backflow seal for a throttled drainage of the accumulating rainwater. Delimitation to the greenery is done with a green roof safety drain e.g.(Art. No. 5000)



Technical data retention element



Art.	Description	Opening size	Drainage capacity*
2150	Retention element	100%	1,25 l/s (35 mm)
2150.I 2150.II	Retention element with seal Type I resp. II	75%	1,05 l/s (35 mm)
		50%	0,75 l/s (35 mm)
		25%	0,40 l/s (35 mm)

*Drainage capacity acc. to DIN EN 1253-2 in l/sec (accumulation height in millimeters)