

Dimension | Art. No.



Terrace construction set, can be walked upon
5900



Terrace construction set (black), can be walked upon
without odour trap **5902**
with odour trap **5902.G**



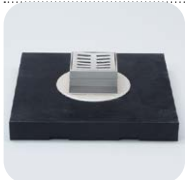
Terrace construction set PLUS
without odour trap **5902.E**
with odour trap **5902.G.E**



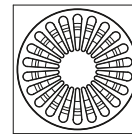
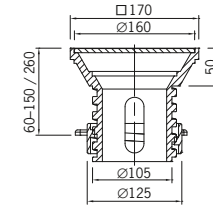
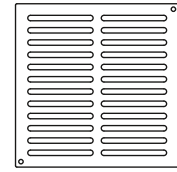
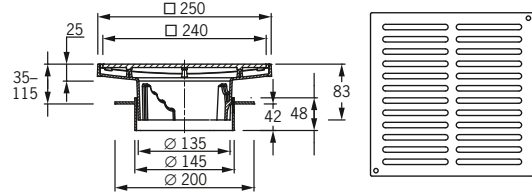
Terrace construction set PLUS long version
without odour trap **5902.E.L**
with odour trap **5902.G.E.L**



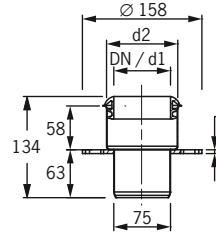
Sieve ring extension, made of stainless steel
DN 70 **5903**
DN 100 **5904**



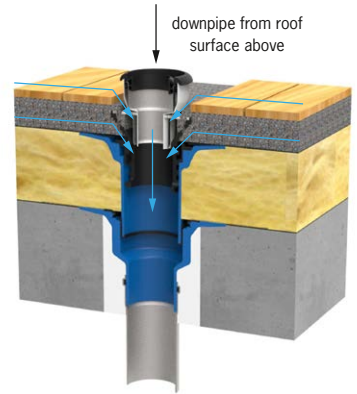
Terrace construction set, can be driven upon **5905**
Extension frame 25 mm **5906**
Load bearing panel **5907**



Dimensions in brackets for terrace construction set PLUS long



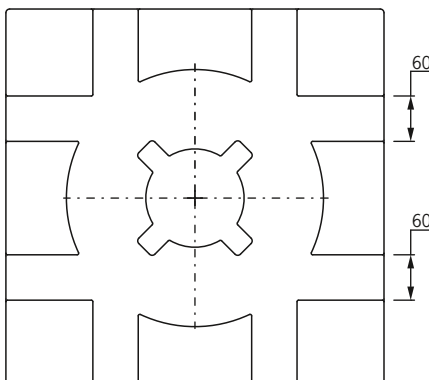
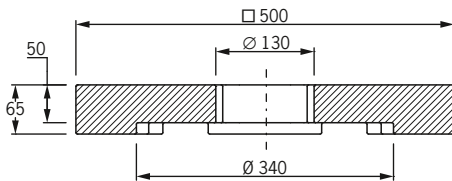
Installation example terrace construction set and sieve ring extension element



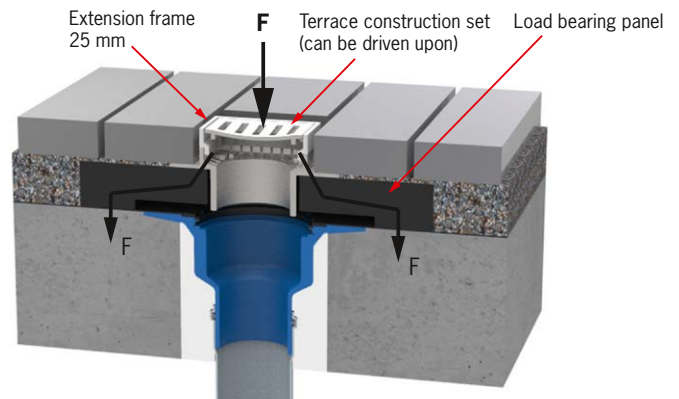
Compact collar drain with extension and terrace construction set with sieve ring extension piece built into terrace

Art.	DN	d1	d2
5903	70	75	98
5904	100	110	126

Technical data load bearing panel

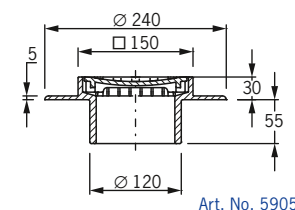


Installation example terrace construction set (can be driven upon) with load bearing panel

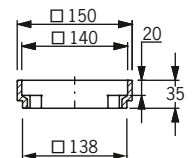


Compact collar drain with load-bearing panel and terrace construction set (can be driven upon) with slab covering installed in the crushed stone bedding. The load-bearing panel channels the force past the terrace construction set into the concrete slab.

Technical data terrace construction set and extension frame



Art. No. 5905



Art. No. 5906

Dimension | **Art. No.**

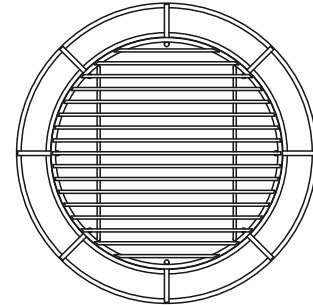
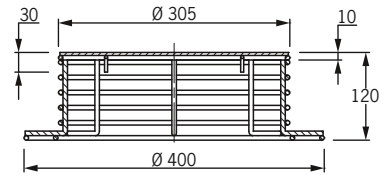


Stainless steel pebble collar
5908

can be fitted, even subsequently, onto any common drain. The long-term protection against pebble blockage in pipes.

Lid made of stainless steel
5909

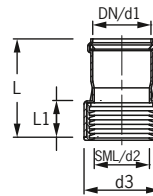
suitable for the pebble collar made of stainless steel



Drain/SML pipe adaptor

- DN 50/50 **5940**
- DN 70/80 **5942**
- DN 100/100 **5944**

Ideal to connect Grumbach drains DN 50, 70 or 100 with a SML pipe of the same DN width.



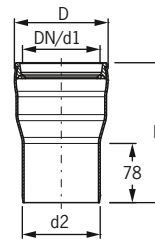
Art.	DN	d1	SML	d2	d3	L	L1
5940	50	50	50	58	80	85	32
5942	70	75	80	83	100	130	48
5944	100	110	100	110	132	150	53



Drain/Loro connection piece

- DN 70 **5953***
- DN 100 **5954***

For a connection between a Grumbach drain DN 70 or 100 and a Loro-X socket pipe of the same DN nominal width.

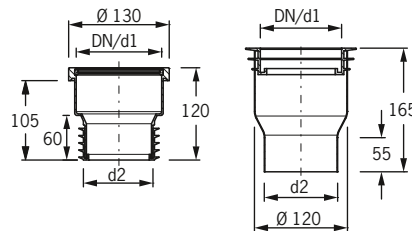


Art.	DN	d1	d2	H	D
5953	70	75	73	150	87
5954	100	110	103	180	124



Adaptor DN 100

made of titanium zinc, without seal, for connection with a vertical zinc pipe
DN 100 **2633***
i.d. 100, 6-piece

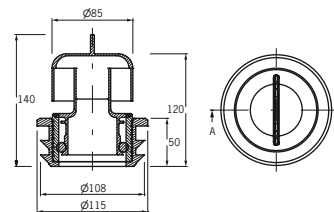


Art.	DN	d1	d2
5955	100	110	95
5955.PP	100	110	95



Adaptor DN 100

for connection with a zinc pipe
made of titanium zinc
DN 100 **5955***
made of PP
DN 100 **5955.PP**



Bell odour trap

5950

incl. seal, suitable for Art. No. 2104/2124/3104/3124

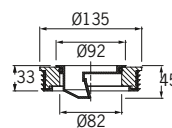


Odour trap

5952

suitable for all Universal drains and compact collar drains

Note for all types: reduces drainage capacity to approx. 0,9 l/s!

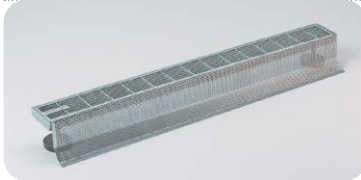


* Achtung! Diese Produkte sind nicht rückstausicher, daher ist der Einbau nur in verticalen Fallrohren außerhalb von Gebäuden zulässig!

Dimension | Art. No.



Drainage grate
 100x1000 mm **5960**
 150x1000 mm **5962**
 250x1000 mm **5964**



Pebble trap strip
5961



NEW!

Pebble trap
 black **5970**
 red **5970.R**



NEW!

Pebble trap
 black **5971**
 red **5971.R**



Universal pebble trap, black, with attachment
 internal diameter
 80–120 **5973**
 120–140 **5973.3**



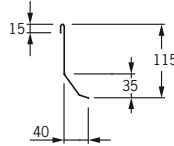
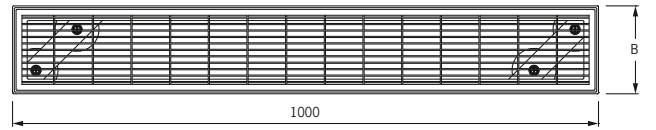
Universal pebble trap, red, with attachment
 internal diameter
 80–120 **5973.R**
 120–140 **5973.3.R**



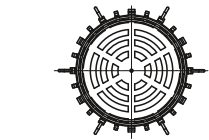
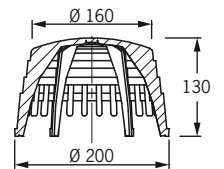
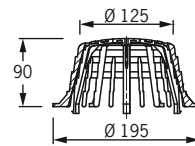
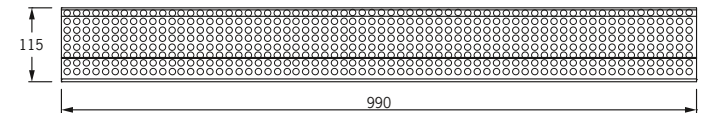
Pebble trap
 black **5972**
 red **5972.R**



Pull-off protection made of EPDM
 suitable for all common
 DN 70 resp. DN 100 pipes
 DN 70 **5341**
 DN 100 **5343**



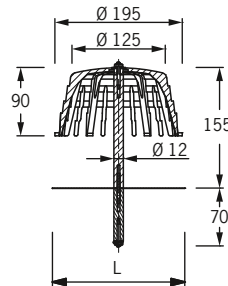
Art.	B
5960	100
5962	150
5964	250



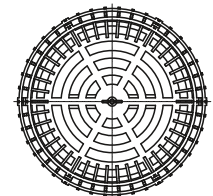
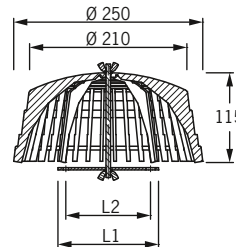
Art. No. 5970/5970.R



Art. No. 5971/5971.R



Art.	Internal diameter	L
5973	80–120	125
5973.3	120–140	140



Drain type	L1	L2
Clamp flange drain / attica flat drain / trapezoidal drain / Collar drain DN200 / redevelopment drain DN200 / Eco drain	203	183
redevelopment drain DN150 / redevelopment drain made of aluminum	170	150
redevelopment drain 56	160	140

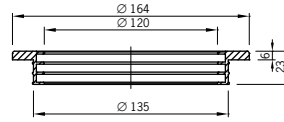
Dimension | Art. No.



Backflow seal for extension elements

5990.N

suitable for all compact collar drains and Universal drains



Plug-in attachment made of PUR for emergency drainage

Type I **2091**

for the **extension elements** of the Universal drains and compact collar drains

Type II **2091.I**

for all Universal drains and compact collar drains

Typ I

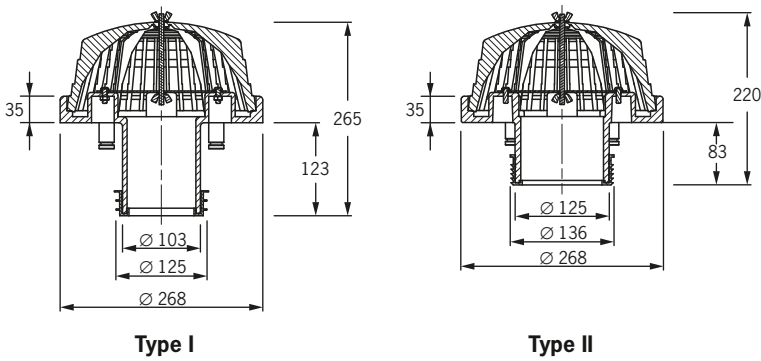
Typ II



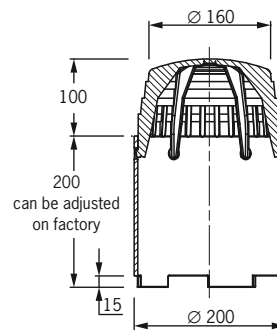
Inverted roof attachment

5918

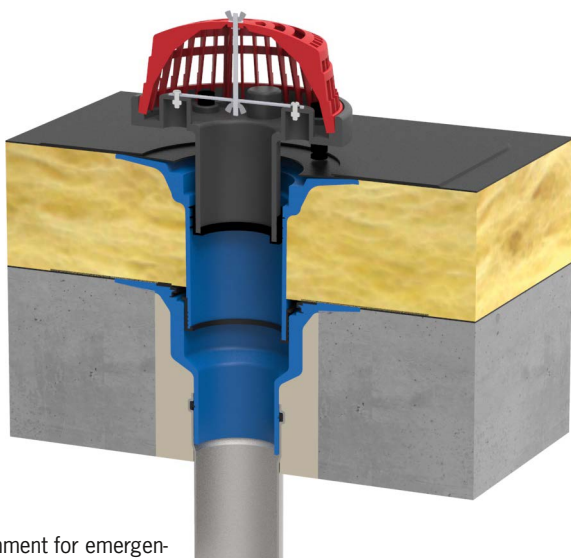
Technical data plug-in attachment



Technical data inverted roof attachment

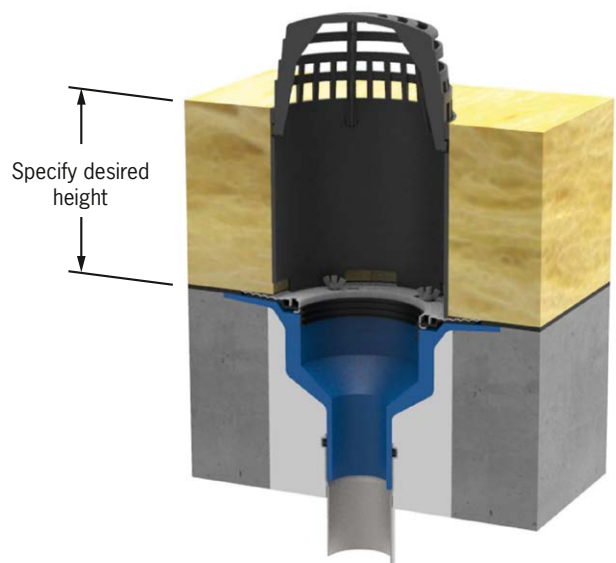


Installation example plug-in attachment



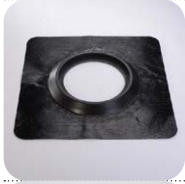
Plug-in attachment for emergency drainage inserted in a compact collar drain with extension element in an insulated roof.

Installation example inverted roof attachment



Height-adjusted inverted roof attachment incl. pebble trap in an inverted roof with pebble covering

Dimension | Art. No.



Accumulation ring made of PUR height 35 mm
5915

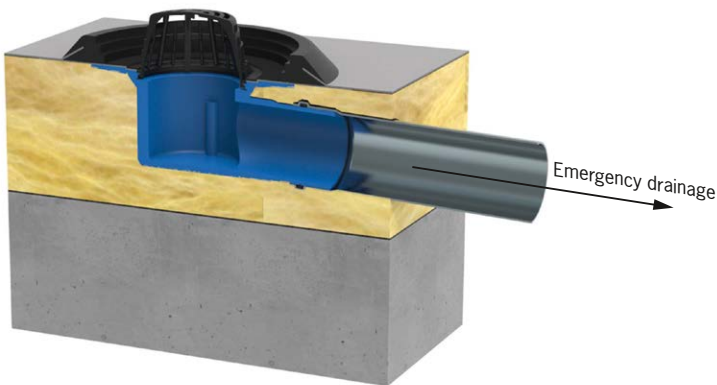


Half accumulation ring made of PUR height 45 mm
can be shortened as required
with wedge **5916**
without wedge **5916.0**

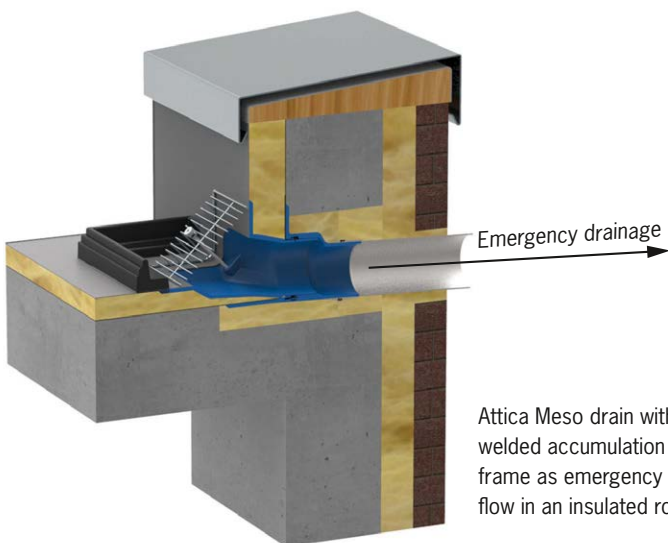


Accumulation frame made of PUR height 65 mm
can be shortened as required
with wedge **5917**
without wedge **5917.0**

Installation example accumulation ring

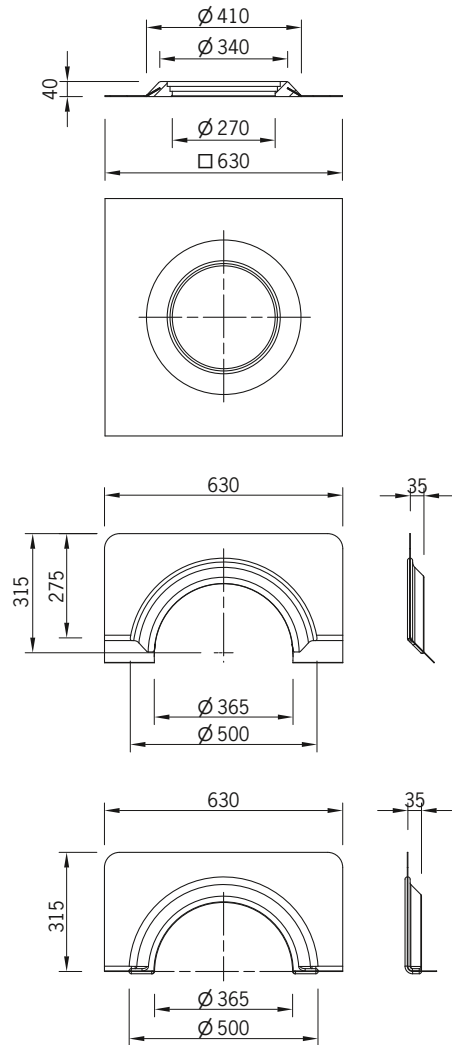


Horizontal drain with accumulation ring as emergency drainage, mounted in an insulated roof



Attica Meso drain with welded accumulation frame as emergency over-flow in an insulated roof.

Technical data accumulation ring made of PUR



Technical data Anstaurahmen made of PUR

