

■ Attica Power Drain negative pressure – more power



Attica power drain with pressure flowthrough element for main drainage



Attica power drain with pressure flowthrough element for emergency drainage

Attica power drain for main drainage

including:

- Attica flat drain with adhesive collar DN 70, long version
- Pressure flowthrough element for main drainage (black)
- stainless steel pipe bend DN 70, 87,5°
- 2 safety clamps
- stainless steel pipe DN 70 2m resp. 3m

Attica power drain for emergency drainage

including:

- Attica flat drain with adhesive collar DN 70, long version
- Pressure flowthrough element for emergency drainage (red)
- stainless steel pipe bend DN 70, 87,5°
- stainless steel pipe bend DN 70, 45°
- 3 safety clamps
- stainless steel pipe DN 70 2m resp. 3m

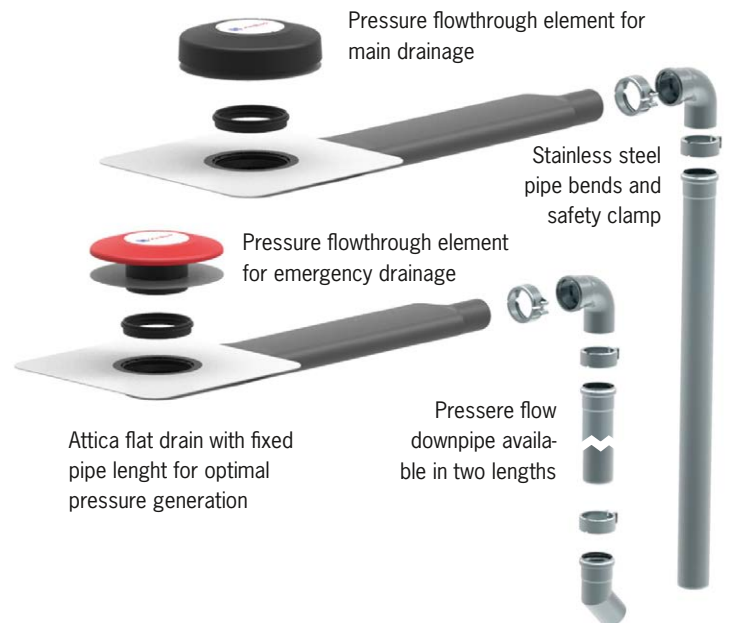
Attica power drain

drains via negative pressure and attains very high drainage capacities.

The **Grumbach attica power drain** consists of the Grumbach **attica flat drain DN 70**, a special **pressure flowthrough element** and the corresponding **pressure flowthrough downpipe** made of stainless steel with a defined length incl. a sufficient number of **pressure pipe connection clamps**.

Planning of the **attica power drain** is so easy (as with free level drainage) due to the fixed provision of all drainage capacity parameters by the manufacturer.

Due to the low construction height of the attica flat drain (only 70 mm), the attica power drain fits perfectly into the heat insulation!



Installation example attica power drain

Grumbach attica power drain for **main drainage**.

Installed in a insulated roof with optional vapour barrier inlet and pressure flow downpipe.



Grumbach attica power drain for **emergency drainage**.

Installed in a insulated roof with optional vapour barrier inlet and pressure flow downpipe.



■ Attica Power Drain negative pressure – more power

Dimension | Art. No.



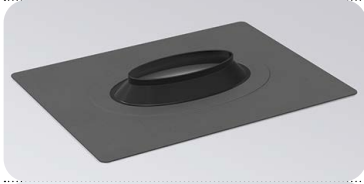
Attica power drain for main drainage

- consisting of:
- Attica flat drain with adhesive collar DN 70, long version
 - pressure flowthrough element for main drainage
 - stainless steel pipe bend DN 70, 87,5°
 - 2 safety clamps
 - stainless steel pipe DN 70, available in 2 downpipe lengths:
2 m **3623.2**
3 m **3623.3**



Attica power drain für die Notentwässerung

- bestehend aus:
- Attica flat drain with adhesive collar DN 70, long version
 - pressure flowthrough element for emergency drainage
 - stainless steel pipe bend DN 70, 87,5°
 - stainless steel pipe bend DN 70, 45°
 - 3 safety clamps
 - stainless steel pipe DN 70, available in 2 downpipe lengths:
2 m **3624.2**
3 m **3624.3**

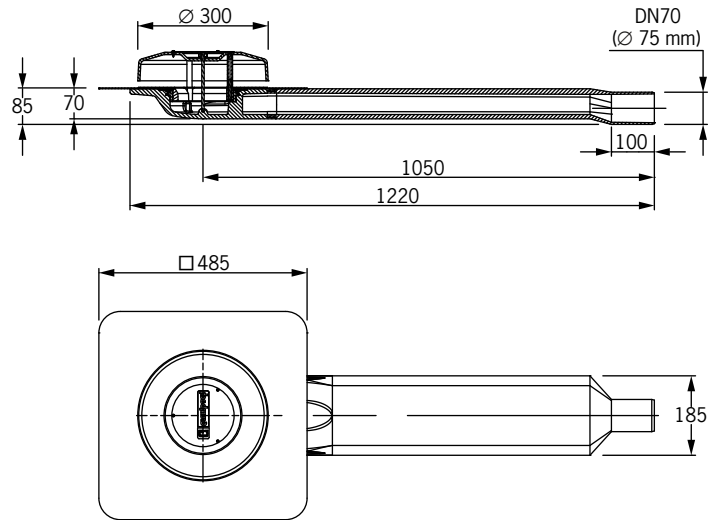


Vapor barrier connection cuff DN 70/100 **2491.M**

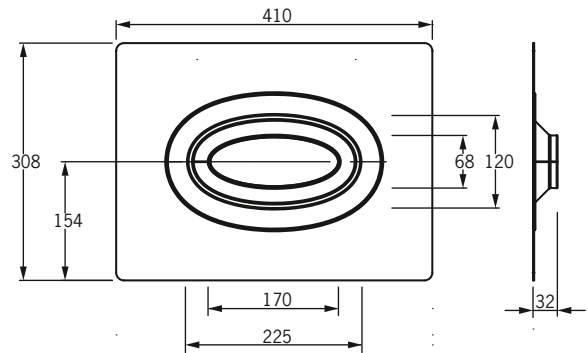


Insulating element made of EPS long version DN 70 **5910.70**

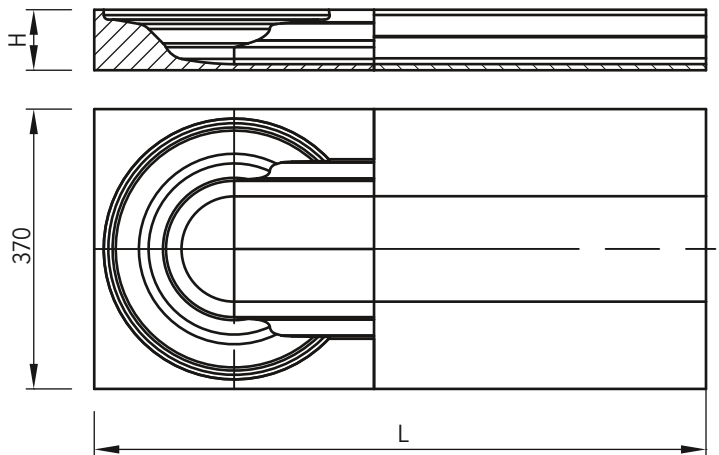
Technical data attica power drain



Technical data vapor barrier connection cuff



Technical data insulating elements



Art. No.	Downpipe length	Accumulation height in mm					
		15	25	35	45	55	65
		Drainage capacities in l/s*					
3623.2	2 m	2,2	6,0	13,0	13,5	13,6	13,7
3623.3	3 m	2,2	6,0	13,5	14,5	14,6	14,7
3624.2	2 m	10,5	14,0	14,2	14,3	14,3	14,3
3624.3	3 m	10,8	15,0	15,2	15,3	15,3	15,3

Art. No.	L	H
5910.70	810	80
5910.100	810	100

*Drainage capacity acc. to DIN EN 1253-2 in l/sec (accumulation height in millimeters)