

■ Stainless Steel Flat Sewer System in conjunction with the Attica Plus Drain/Attica Flat Drain for cascade or staggered storey Drainage



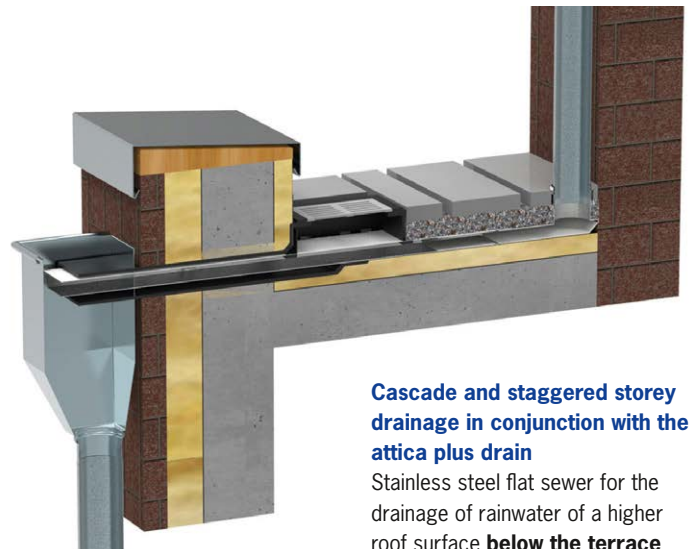
Stainless steel flat sewer system

Especially high quality and durable **stainless steel flat sewer system** for the collection and targeted direction of rainwater over e.g. terraces, balconies or flat roofs with especially low construction heights. Simply lay it between the damp proof layer and the surface layer.

The water is directed and channelled beyond the edge of the building without stressing the transfer surface.

If the attica is closed on all sides, the flat channel can be routed to the outside through the **attica flat drain** (in conjunction with the **new transition seal**) or the **attica plus drain**.

The flat attica plus drain has a particularly high drainage capacity and not only serves the flat sewer, but also **the water from the sealing layer**.



Cascade and staggered storey drainage in conjunction with the attica plus drain

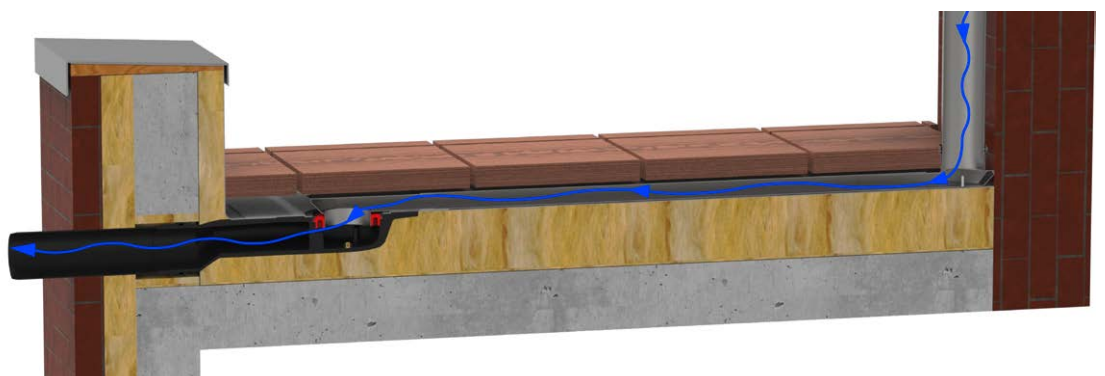
Stainless steel flat sewer for the drainage of rainwater of a higher roof surface **below the terrace covering through the attica to the outside**.

Here, combined with the **attica plus drain** and the corresponding inlet shaft for the simultaneous drainage of the terrace surface.

To prevent frost damage, we recommend using our trace heating systems (see page 74).

Cascade and staggered storey drainage in conjunction with the flat drain made of PUR with adhesive collar

With the **new EPDM transition seal** (shown in red), the flat channel system can also be connected to the **attica flat drain with adhesive collar**. Simultaneous drainage of the terrace surface through the attica flat channel drain is not possible in this case.



Stainless Steel Flat Sewer System with accessoire

Dimension | Art. No.



Stainless steel flat sewer system

1. Connection socket
2670



2. Main body
2672

length 950 mm
height 40 mm



3. Connector
2674

4. Angled connector 45°
2676

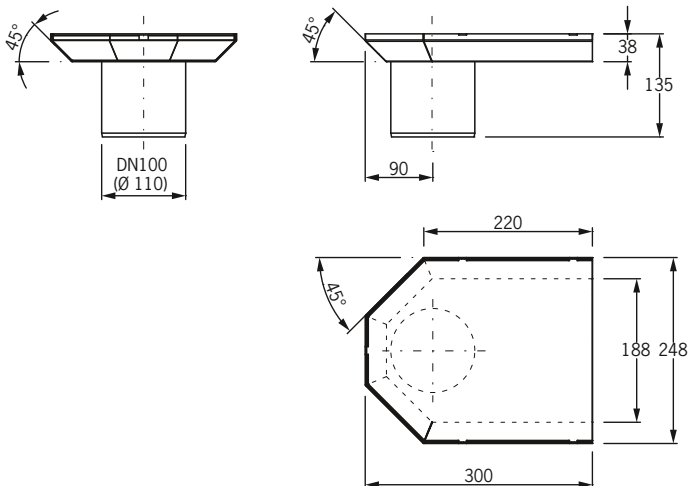


5. Drain connection
2678

The flat sewer system consists of a maximum of 5 different components:

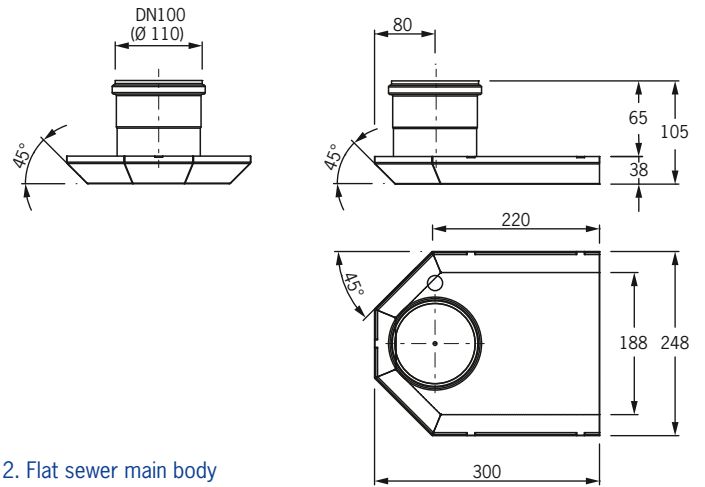
1. flat sewer **connection socket**
2. flat sewer **main body**
3. flat sewer **connector**
4. flat sewer **angled connector 45°**
5. flat sewer **drain connection**

5. Flat sewer drain connection

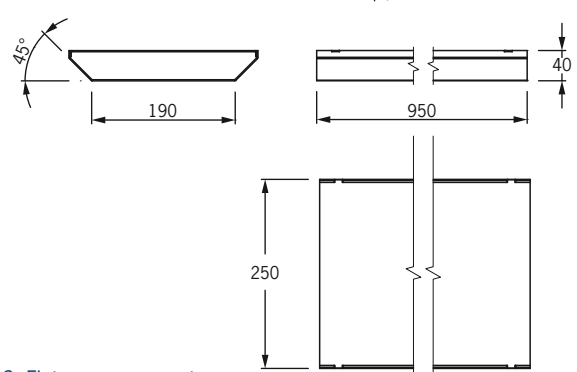


Technical data stainless steel flat sewer system

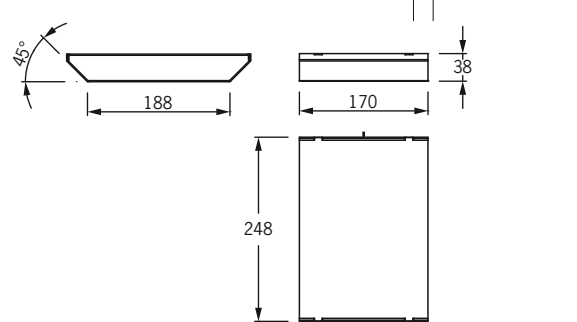
1. Flat sewer connection socket



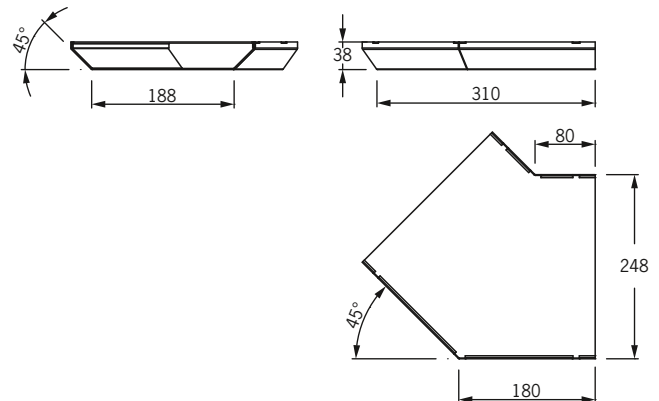
2. Flat sewer main body



3. Flat sewer connector



4. Flat sewer angled connector 45°



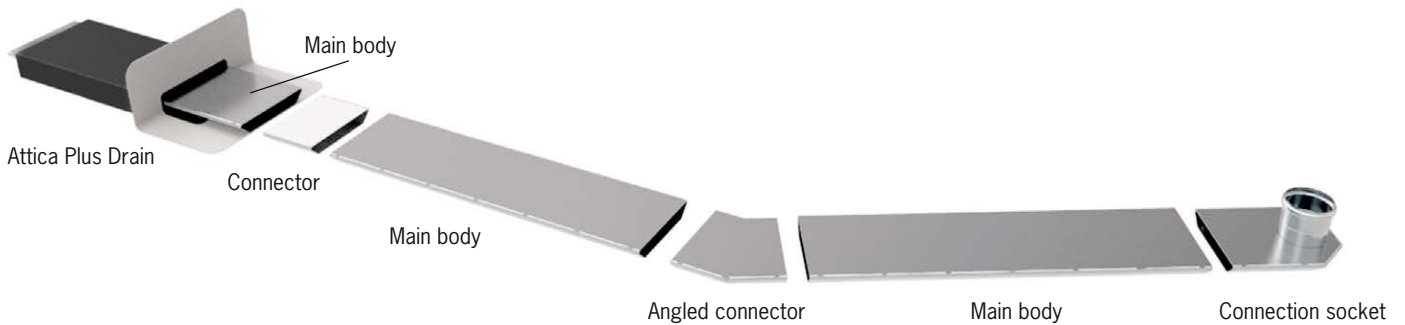
Stainless Steel Flat Sewer System with Attica Plus Drain or Attica Flat Drain

	Attica Plus drain made of PUR (black) 3435
	Attica flat drain made of PUR with adhesive collar DN 70 3441 (610 mm) DN 100 3443 (610 mm) DN 70 3441.L (1200 mm) DN 100 3443.L (1200 mm)

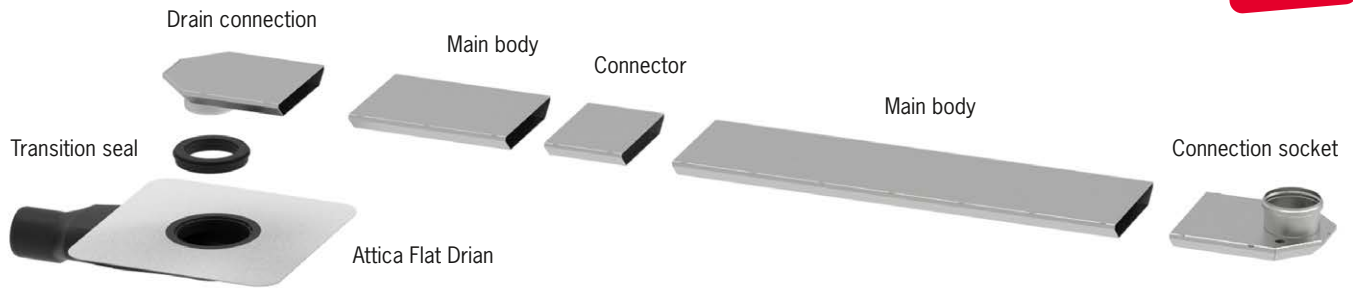
The flat sewer system can be combined with the attica plus drain and the attica flat drain and consists of a maximum of 5 different components:

1. flat sewer **connection socket**
2. flat sewer **main body**
3. flat sewer **connector**
4. flat sewer **angled connector 45°**
5. flat sewer **drain connection**

Stainless steel flat sewer system inconjunction with attica plus drain



Stainless steel flat sewer system inconjunction with attica flat drain with adhesive collar



With the new **transition seal** (shown in red), the flat sewer system can be connected to the attica flat drain with adhesive collar. The **transition seal made of EPDM** tapers the cup area of the drain to DN 100 so that the drain connection of the flat sewer system (or bends, pipes or standpipes) can be inserted tightly.

