

## ■ Continuous Balcony Drain, lowerable



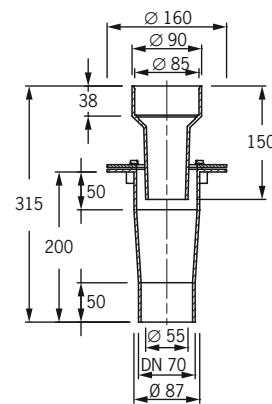
### Continuous balcony drain, lowerable

Made of aluminum, DN 70, with clamp flange and flange press seal, 40 mm flange width. The special solution for prefabricated buildings.

### Continuous balcony drain with clamp flange made of aluminum

is particularly suited for balconies in blocks of flats of panel or prefabricated buildings. The down pipes can be subsequently installed or removed. The special solution: Flange with a diameter of 160 mm with clamp flange or simple for sealing with liquid plastic.

### Technical data



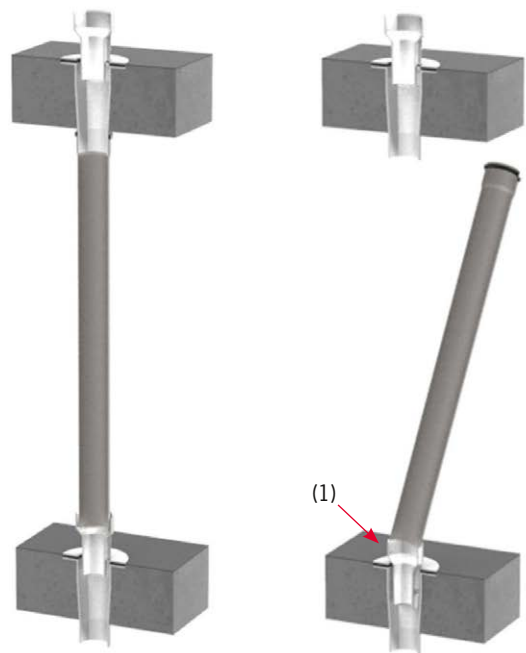
Dimension | Art. No.



**Continuous balcony drain, lowerable**

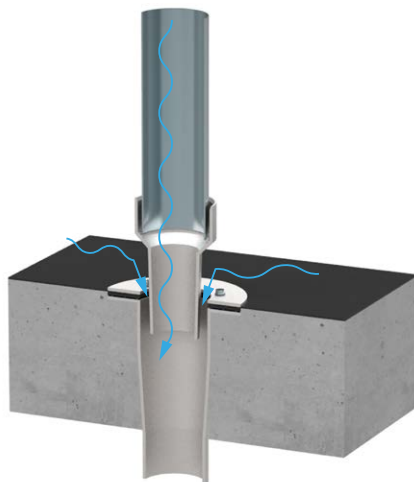
DN 70     **2701**

### Installation example



### Installation example

The continuous balcony drain can be installed in a stacked manner and not only drains the water from the installation area but also the water coming from the down pipe.



By lifting and locking the lower pipe inlet, the pipe sleeve is inserted onto the supports of the upper drain.

The sunken pipe inlet (1) allows the down pipe to be inserted or removed.