

■ Garage/Balcony Drain with accessories

Height 90 mm only!

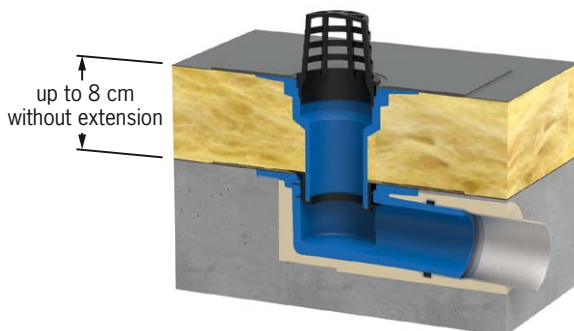


Garage/Balcony drain DN 70 made of PUR

- secure fixed/loose flange system with quadruple screwing or particularly securely fitted adhesive collar
- **Very low construction height!**
- A lot of practical accessories for the use in garage, balcony and terrace

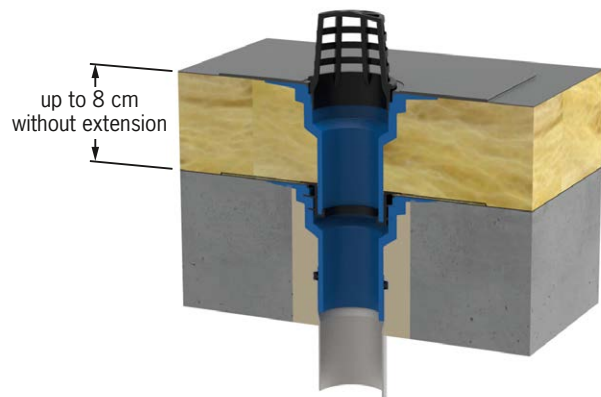
The **Garage/Balcony drains** distinguish themselves through their particularly small and compact appearance with a support diameter of DN 70; this is the case with the clamp flange and the adhesive collar version. The horizontal drain is especially suitable for many problematic situations on balconies, loggias and small roofs, due to its **particularly low construction height**.

Installation example 1

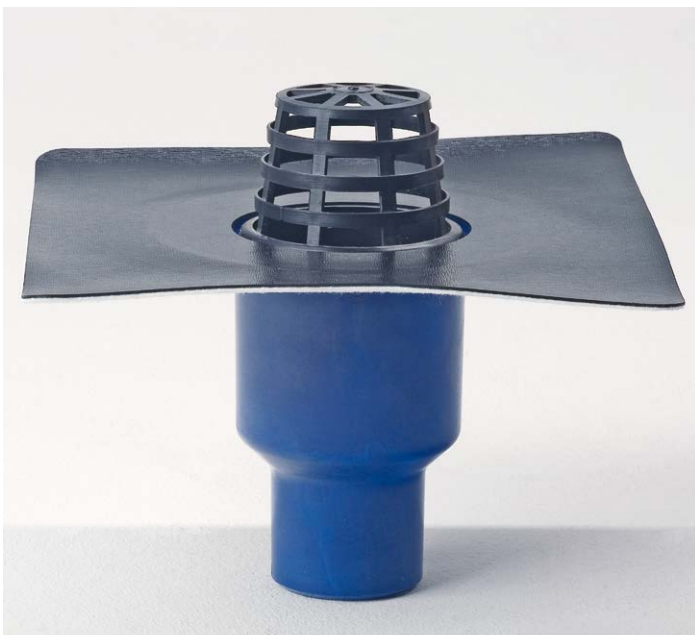


Garage/Balcony drain horizontal DN 70 with extension element in an insulated roof

Installation example 2



Garage/Balcony drain vertical DN 70 with extension element in an insulated roof



Garage/Balcony drain DN 50/70 and DN 70/100 made of PUR

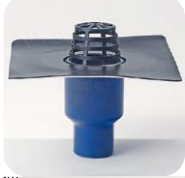
- with dual function DN 50/70 resp. DN 70/100
- for getting DN 70, simply saw off the DN 50 support
- for getting DN 100, simply saw off the DN 70 support

Garage/Balcony Drain with accessories

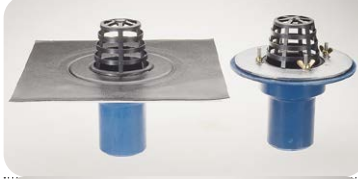
Dimension | Art. No.



Garagen/Balcony drain DN 50/70 made of PUR
vertical
Adhesive collar **3740**



Garagen/Balcony drain DN 70/100 made of PUR
vertical:
Adhesive collar **3741**



Garagen/Balcony drain DN 70 made of PUR
vertical:
Adhesive collar **3702**
Clamp flange **2702**



horizontal:
Adhesive collar **3712**
Clamp flange **2711**



Extension element DN 70 made of PUR
Adhesive collar **3780**
Clamp flange **2780**



Inlay grating round
Stainless steel **2794**
suitable for Art. No. 3740, 3741
made of PP **2794.P**
suitable for Art. 3702, 3712, 3780



Terrace construction set (black), small, can be walked on
2795
suitable for Art. No. 3740, 3741



Terrace construction set, can be driven upon
2797

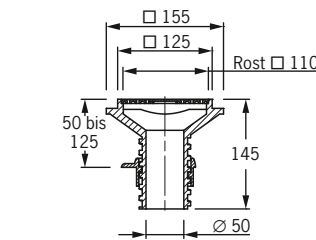
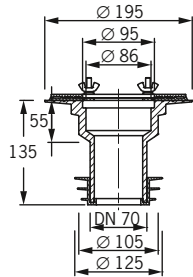
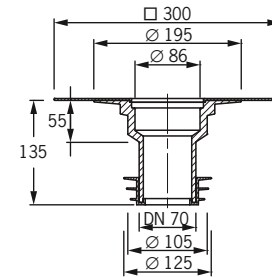
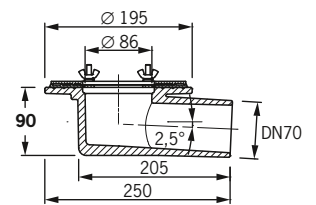
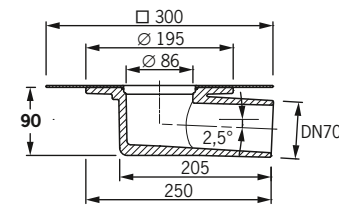
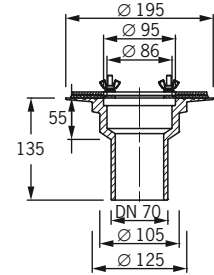
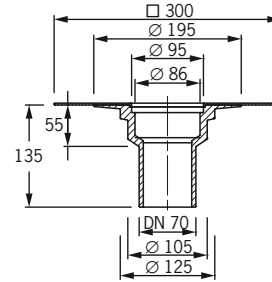
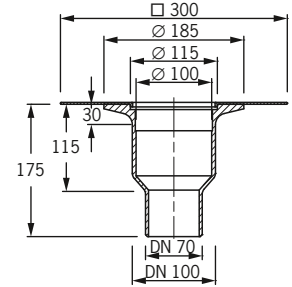
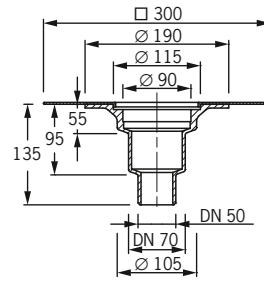


Balcony attachment made (PP)
suitable for all Garage/Balcony drains, except for Art. No. 3741
without odour trap **2790**
with odour trap **2791**
suitable for Art. No. 3741
without odour trap **2798**
with odour trap **2799**

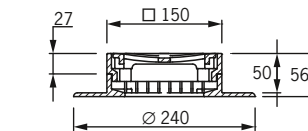


Geruchssperre
suitable for all Garage/Balcony drains, except for Art. No. 3741
Type I **5952.1**
Type II (for Art. 3741) **5952.2**

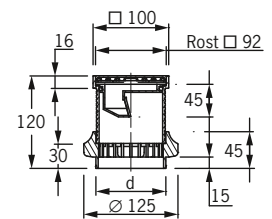
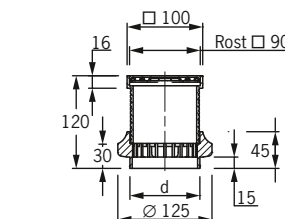
Technical data Garage/Balcony drains



Art. No	Drainage capacity*
3740	2,2/2,3 l/s (35 mm)
3741	4,1/4,7 l/s (35 mm)
3702	2,3 l/s (35 mm)
2702	2,5 l/s (35 mm)
3712	2,5 l/s (35 mm)
2711	2,1 l/s (35 mm)



Art. No	d
2790, 2791	92
2798, 2799	110



*Drainage capacity acc. to DIN EN 12532 in l/sec (accumulation height in millimeters)