

# Siphonic Drainage

## The modern method of flat roof Drainage

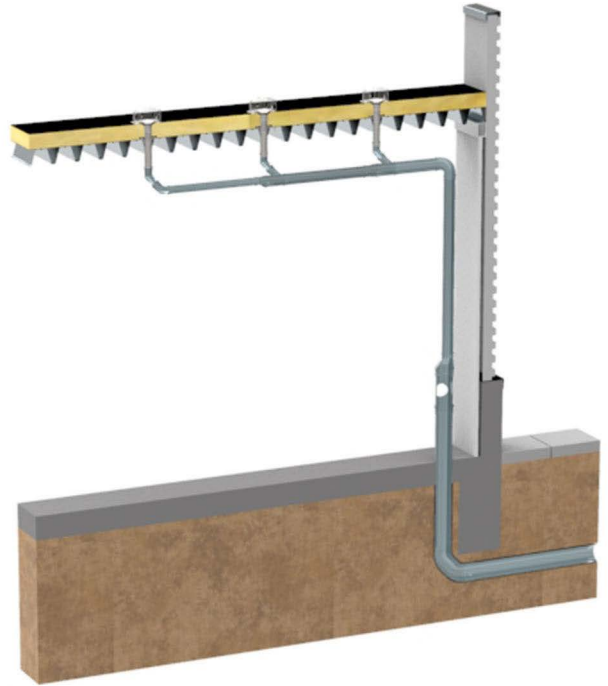


Siphonic drain made of stainless steel (top part) with bitumen collar, vacuum plate and pebble trap.

### Siphonic drainage

We will gladly support you with the calculation of rain drainage systems with siphonic drainage. You will receive a suggestion from us for the realisation of your drainage system with a list of the required drains, pipes and fastening pieces.

### Installation example siphonic drainage



Dimension | Art. No.

**Siphonic drain made of stainless steel with bitumen collar (top)**

DN 50    **3620.BIT**  
DN 70    **3622.BIT**



**Siphonic drain made of stainless steel with clamp flange (top)**

DN 50    **2620**  
DN 70    **2622**



**Stainless steel drain (bottom)**

DN 50    **2680**  
DN 70    **2682**

### Technical data siphonic drain made of stainless steel

Art.	DN	D1	D2
3620	50	50	65
3622	70	75	90
2620	50	50	65
2622	70	75	90

