

## ■ Ventilation for roofs with and without insulation

### Condensation drain

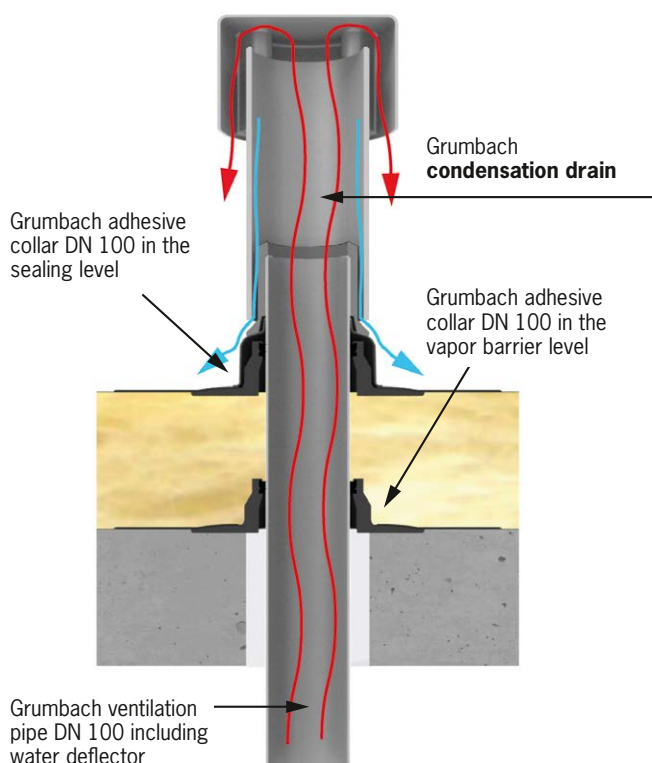
- simple vertical attachment, which can be slipped on, for ventilation pipe DN 100 on flat roofs to remove warm damp air
- for the ventilation of inside spaces, e.g. bathrooms or kitchens with extractor fans
- prevents condensation from flowing back into the ventilation pipes
- condensation from the inside of the attachment is safely drained onto the roof
- including condensation drain, ventilation pipe DN 150 (400 mm long) and rain cap DN 150



Grumbach condensation drain including: condensation drain ring, ventilation pipe DN 150 (400 mm long) and rain cap DN 150

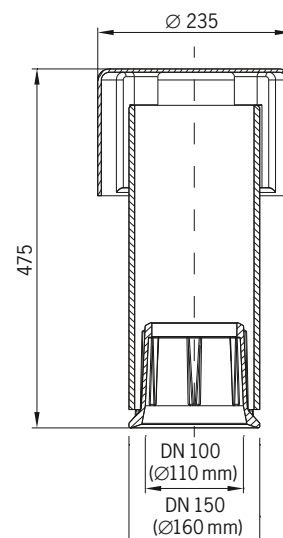
### Installation example condensation drain

Ventilation pipe DN 100 in a flat roof in an insulated roof construction incl. fitted Grumbach condensation drain



Practical example:  
Ventilation pipe DN 100 with  
two adhesive collars DN 100  
with Grumbach condensation  
drain attached

### Technical data condensation drain



# Ventilation for roofs with and without insulation

Dimension | Art. No.



Adhesive collar made of PUR	
DN 70	<b>5102</b>
DN 100	<b>5104</b>
DN 125	<b>5106</b>
DN 150	<b>5108</b>



Ventilation pipe made of PE	
DN 70	<b>5122</b>
DN 100	<b>5124</b>
DN 125	<b>5126</b>
DN 150	<b>5128</b>



Rain cap made of PE resp. PA	
DN 70	<b>5131</b>
DN 100	<b>5133</b>
DN 125	<b>5135</b>
DN 150	<b>5137</b>



Protective basket made of PE	
DN 70	<b>3492.S</b>
DN 100	<b>3493.S</b>
DN 125	<b>3498</b>



Extension piece made of (PE) for energy inlet	
DN 70	<b>5142</b>
DN 100	<b>5144</b>
DN 125	<b>5146</b>
DN 150	<b>5148</b>

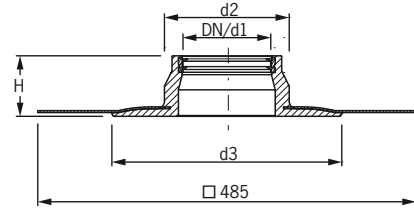


Protection cap made of EPDM	
DN 70	<b>5342</b>
DN 100	<b>5344</b>
DN 125	<b>5346</b>
DN 150	<b>5348</b>



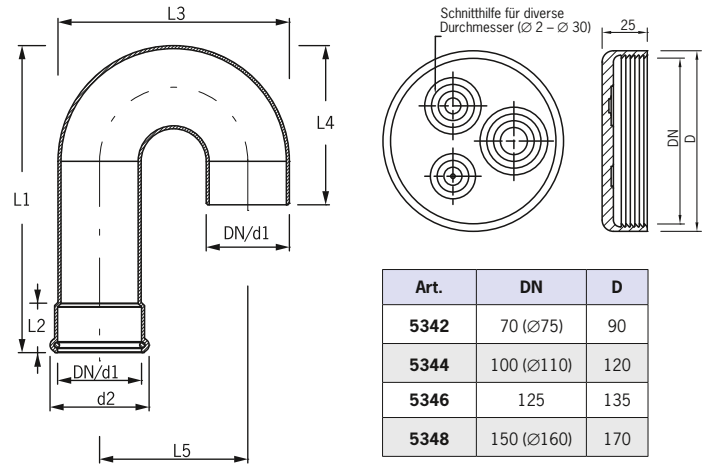
Condensation drain (Attachment)	
DN 100	<b>5145</b>

## Technical data adhesive collars/flanges



Art.	DN	d1	d2	d3	d4	H
<b>5102</b>	70	75	160	310	–	80
<b>5104</b>	100	110	165	300	–	85
<b>5106</b>	125	125	185	355	–	70
<b>5108</b>	150	160	200	395	–	75

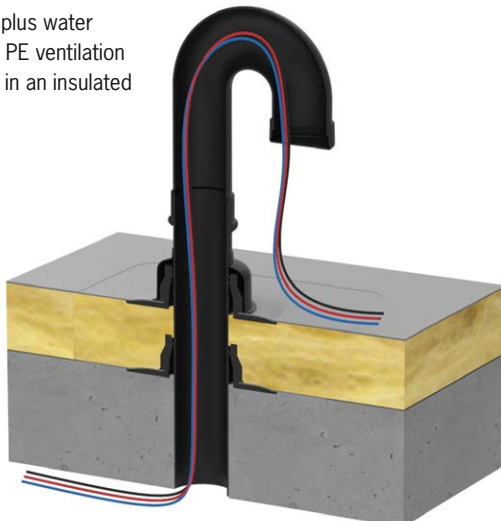
## Technical data energy inlet and protection cap



Art.	DN	D
<b>5342</b>	70 (ø75)	90
<b>5344</b>	100 (ø110)	120
<b>5346</b>	125	135
<b>5348</b>	150 (ø160)	170

## Installation example energy inlet

Two adhesive collars plus water deflector placed on a PE ventilation pipe incl. energy inlet in an insulated roof.



Art.	DN	d1	d2	L1	L2	L3	L4	L5
<b>5142</b>	70	75	95	340	65	215	165	140
<b>5144</b>	100	110	130	410	65	310	215	196
<b>5146</b>	125	125	150	345	65	345	210	220
<b>5148</b>	150	160	190	400	65	450	255	290