

Construction height 108 cm



■ Corner WC-block 108 cm high for flush panels "Sigma 01/10/20/21/40/50/70" (Geberit®)

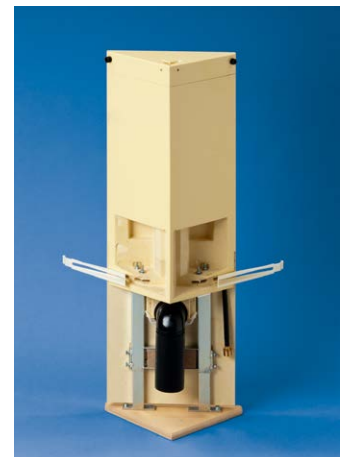
Art.-No. 1301.III

625,- €

Height 108 cm, Depth 22 cm, Diagonal 40 cm

With dual volume flushing technology or Start/Stop flush completely fitted for wall-hanging WC:

- adjustable in 4-stages
- with fastening material (for corner/for **single-sided** wall fastening)
- with sound proof set
- with sound proofing certification
- with height-adjustable feet (up to 15 cm)
- with assembly room cover below
- with moulded cistern (internal part from Geberit®) incl. cistern protection
- building protection caps
- with metre indication line
- with WC connection pipes (90°-bend made of PE Ø 90/90 mm and PE adaptor Ø 90/110 mm)
- with WC connection pipes Ø 90 mm
- with WC fastening set
- actuation from the front
- without flush panel



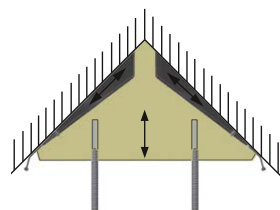
Sanitary blocks

The five major improvements to our "classic one":

- 1 Tapped drill holes/fastening points:**
Now all drill holes apart from the water container! (even with one-sided wall attachments)!
- 2 Integrated, continuous, stageless wall interval regulation**
with simultaneous incorporation of the anchoring screw.
- 3 Integrated anti-twist protection** for the assembly space cover.
- 4 Extended assembly space cover with cutting edges/perforation** for an all-over cover for tiling down to the floor!

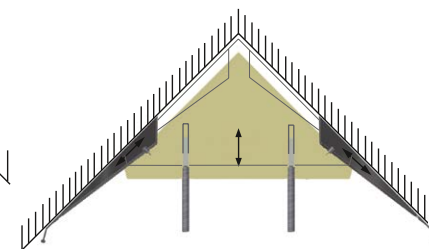
Cross section 1:

Adjusted sting wedge in original position, the block is touching the wall.



Cross section 2:

The wedge is expanded, up to 2 cm if equalisation possible.



"The classic one"



Example of use: Corner WC-block 108 cm high, clad with Grumbach decorative panels in mint, see also page 12.

Flush panels for Grumbach Corner WC-blocks



Sigma 01



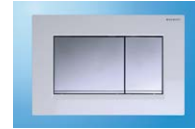
Sigma 10, round button



Sigma 10, square button



Sigma 20/21



Sigma 40



Sigma 50

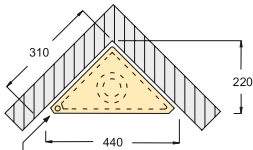


Mambo

Unless otherwise stated, flush panels are **not** included in the scope of delivery of Grumbach corner WC-blocks or WC-blocks.

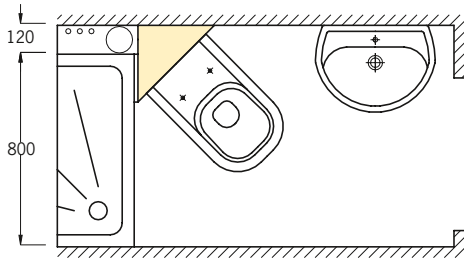
For installation examples, see also photos on page 37, 39-40!

Installation examples

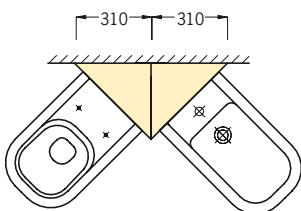


Standard application: Corner WC-blocks 108 or 98 cm for the 90°-corner of a room

- Water connection below at the front on the left-hand side at the front



Corner WC block as a solution and fitting element for problem cases with for example "hose bathrooms".



Combination of corner WC-block and corner bidet block, Height 108 or 98 cm. The corner elements are connected in the factory. Please mention when ordering.

Technical data Corner WC-blocks

Adjustment range height:	0–150 mm
Adjustment range wall:	0–20 mm
Dual volume flushing technology (can be adjusted):	
Factory setting:	4/8.5 l
Small flush volume:	3–4 l
Large flush volume:	6–8.5 l
Water connection:	1/2" female thread
Drain:	90°-bend made of PE Ø 90/90 mm and PE-adaptor Ø 90/110 mm

